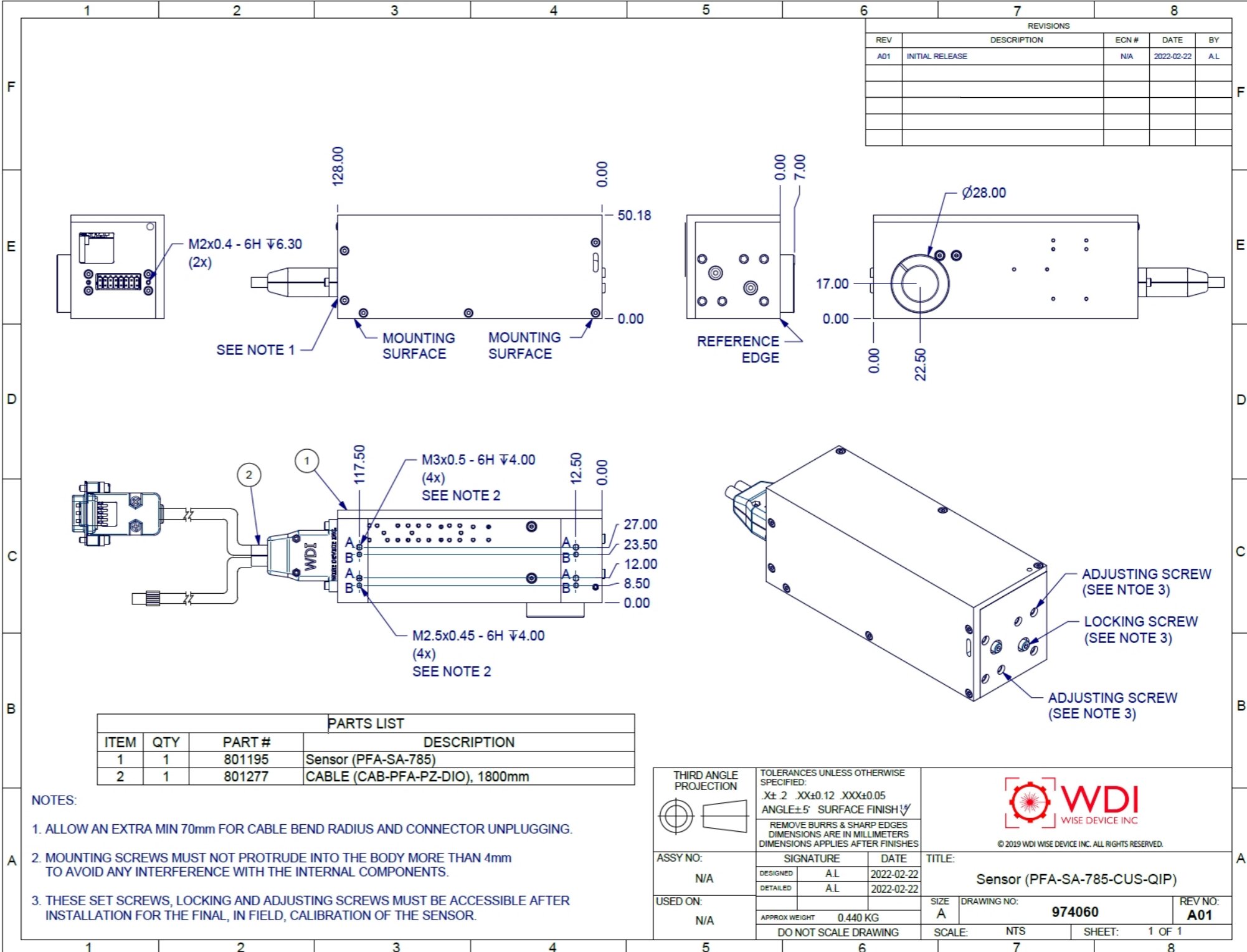


REVISIONS				
REV	DESCRIPTION	ECN #	DATE	BY
A01	INITIAL RELEASE	N/A	2022-02-22	AL



PARTS LIST				
ITEM	QTY	PART #	DESCRIPTION	
1	1	801195	Sensor (PFA-SA-785)	
2	1	801277	CABLE (CAB-PFA-PZ-DIO), 1800mm	

- NOTES:**
1. ALLOW AN EXTRA MIN 70mm FOR CABLE BEND RADIUS AND CONNECTOR UNPLUGGING.
  2. MOUNTING SCREWS MUST NOT PROTRUDE INTO THE BODY MORE THAN 4mm TO AVOID ANY INTERFERENCE WITH THE INTERNAL COMPONENTS.
  3. THESE SET SCREWS, LOCKING AND ADJUSTING SCREWS MUST BE ACCESSIBLE AFTER INSTALLATION FOR THE FINAL, IN FIELD, CALIBRATION OF THE SENSOR.

THIRD ANGLE PROJECTION	TOLERANCES UNLESS OTHERWISE SPECIFIED: .X±.2 .XX±0.12 .XXX±0.05 ANGLE±5° SURFACE FINISH√		 <small>© 2019 WDI WISE DEVICE INC. ALL RIGHTS RESERVED.</small>
	REMOVE BURRS & SHARP EDGES DIMENSIONS ARE IN MILLIMETERS DIMENSIONS APPLIES AFTER FINISHES		
ASSY NO:	SIGNATURE	DATE	TITLE:
N/A	DESIGNED: A.L.	2022-02-22	Sensor (PFA-SA-785-CUS-QIP)
	DETAILED: A.L.	2022-02-22	
USED ON:	APPROX WEIGHT	0.440 KG	SIZE: A
N/A	DO NOT SCALE DRAWING		DRAWING NO: 974060
	SCALE:	NTS	REV NO: A01
			SHEET: 1 OF 1

Order number: 2421-005-871-00

Specification – WDI – Autofocus Sensor Kit PFA SA PZ 785  
 manufacturer: WiseDeviceInc., Canada  
 sensor type: PFA SA PZ 785  
 wavelength: 785 nm  
 interface: Gigabit Ethernet  
 weight: 0.44 kg  
 note: Kit includes cable to actuator, BUT no power supply and connection cable to power supply!

compatible actuator: 4401-535-822-01

PQ Änderungsbeschreibung 22-0007

-----+-----  
 Teilekennung : 0 (ohne Auswirkung)  
 Modelländerung: JA  
 StL-Änderung : JA  
 -----+-----  
 neuer Sensor: 801195  
 + 1 Kabel: 801277

NX	EU-D	AL-T1A	US-D	US-ML	not export controlled
				PDM Status	Freigabe
PROTECTIVE NOTE "DIN ISO 16016" TO BE OBSERVED	REV	ECC	DATE	APPROVED	GENERAL TOLERANCE OF DIMENSION, FORM, POS.
	a	Neuauag	25.01.22	Götz	SURF. TREATMT
	b	22-0007	23.05.22	Götz	SCALE 1:2
					MATERIAL 974060
					TITLE
					Autofokus-Kit PFA SA 785 CUS QIP
					DRAWING NO.
					2421-005-871-00-0002b
					SHEET 2 OF 2
					REPLACES

DIN A 3 ALL DIMENSIONS ARE IN MM AND INCLUDE SURFACE TREATMENT

