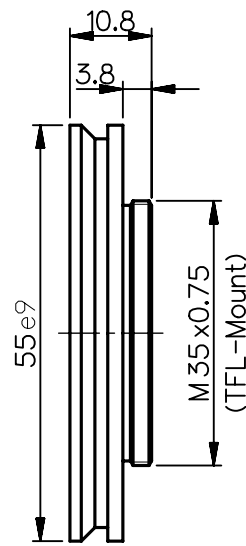
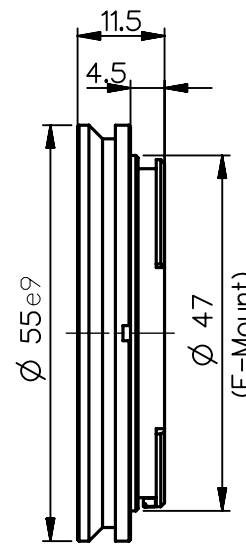


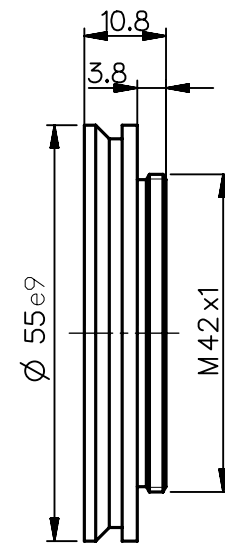
2408-009-106-00



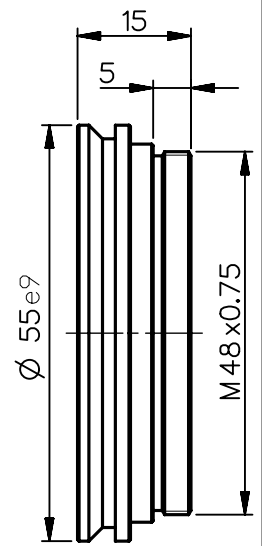
2408-009-174-00



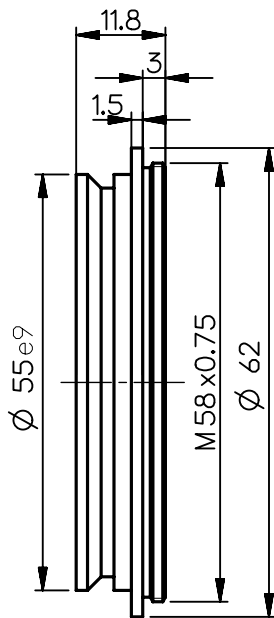
2408-009-142-00



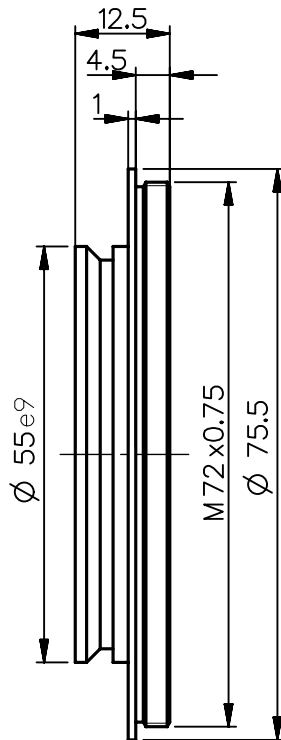
2408-009-119-00



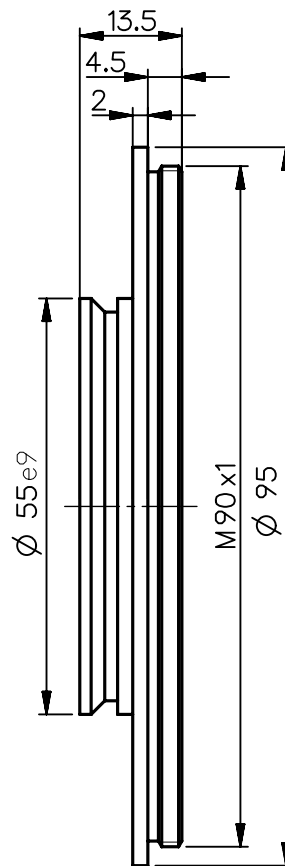
2408-009-148-00



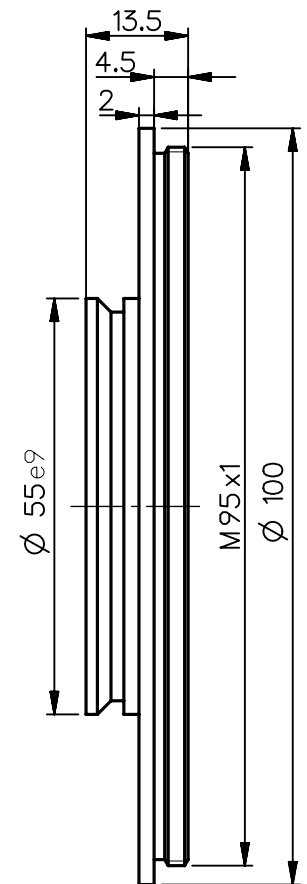
2408-009-132-00



2408-009-134-00



2408-009-166-00



2408-009-155-00

NX	EU-D		AL-T1A		US-D		US-ML		not export controlled	
							PDM-Status Freigabe		-	
Schutzvermerk "DIN ISO 16016" beachten	Rev.	Aenderung	Datum	Freigabe	zul. Abweichung für Mass, Form & Lage	Oberfläche	Maßstab 1:1			
	a	Neuausg					ISO 2768-mH	black, anodised	Werkstoff	
	b	10-132	02.11.10	Labarte			Benennung			
	c	12-0185	12.04.12	Schuber			Camera adapter			
	d	14-0184	21.10.14	Schiffe	Tolerierung		Erster-Datum-Name stellung 29.04.09 Labarte Prüfung 29.04.09 Schaeffler			
	e	15-0737	14.09.15	Boll	ISO 8015					
	f	16-0620	29.09.16	Boll						
g	20-0407	27.04.20	Denk			Zeichnungsnummer				
DIN A 4	Alle Maße in mm, inklusive Oberflächenbehandlung						2408-009-100-41-0002g			Blatt 1 von 1
							Ersatz für			