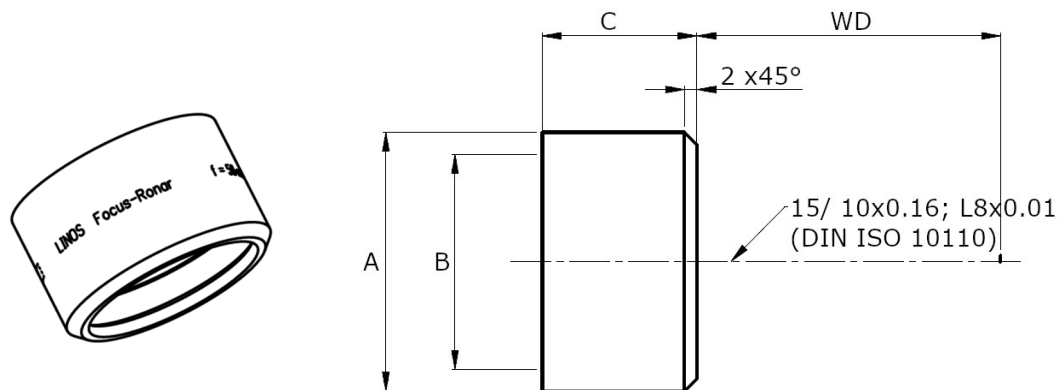


# LINOS Focus-Ronar Lenses

1064nm + 532nm



Part number	A Outer diameter (mm)	B Clear Aperture (mm)	C Height (mm)
4401-505-000-20	Ø 41 h7	34.0	24.6
4401-486-000-20		35.4	18.9
4401-490-000-20		35.4	33.6
4401-420-000-21		35.0	24.0

Dimensions without tolerances are nominal values and illustration not to scale

Part number			4401-505-000-20	4401-486-000-21	4401-490-000-20	4401-420-000-21
Design wavelength	$\lambda$	(nm)	1064			
Coating wavelength	$\lambda$	(nm)	1064 + 532			
Focal length, nominal	FL	(mm)	58	77	90	122
Effective focal length (1064nm / 532nm)	EFL	(mm)	58.1 / 57.5	77.4 / 76.7	90.1 / 89.7	122.2 / 121.4
Working distance (1064nm / 532nm)	WD	(mm)	48.3 / 47.8	72.2 / 71.6	73.7 / 73.1	111.5 / 110.6
Spot diameter, nominal (1064nm @ 35mm EAP) / (532nm @ 23mm EAP)	$\varnothing_{spot}$	( $\mu$ m)	3.2 / 2.5	4.6 / 3.3	5.0 / 3.8	6.9 / 5.1
Transmission (@ 1064 nm / @ 532 nm)	T	(%)	$\geq 97 / \geq 96$			
LIDT coating @1064nm, 9ns, 100Hz		(J/cm <sup>2</sup> )	10			
LIDT coating @532nm, 6ns, 100Hz		(J/cm <sup>2</sup> )	6			

Subject to technical change