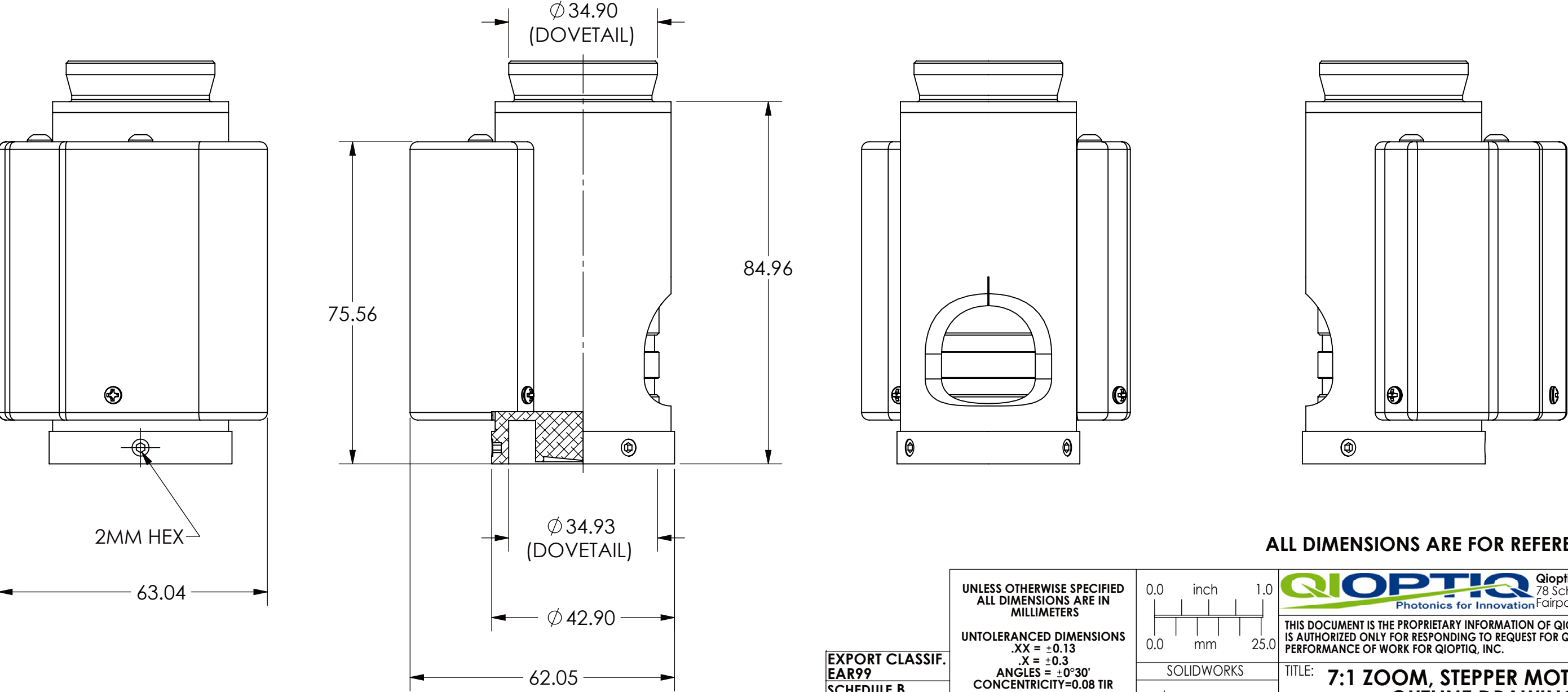


PIN #	CONNECTION
1	MOTOR COIL A +
2	MOTOR COIL A-
3	+5V (SENSOR POWER)
4	HOME SENSOR (ACTIVE LOW)
5	LIMIT SENSOR (ACTIVE LOW)
6	COMMON (RETURN +5V)
7	MOTOR COIL B+
8	MOTOR COIL B-

REVISIONS RECORD				
REV.	ECN	DESCRIPTION	CHG BY DATE	APR. BY DATE
A		RELEASED	GS 12NOV12	PD 12NOV12



ALL DIMENSIONS ARE FOR REFERENCE ONLY

MATERIAL:	THIS TECHNICAL DATA IS CONTROLLED UNDER THE EXPORT ADMINISTRATION REGULATIONS AS EAR99 AND MAY NOT BE EXPORTED TO A FOREIGN PERSON, EITHER IN THE U.S. OR ABROAD, WITHOUT THE PRIOR WRITTEN APPROVAL OF QIOPTIQ, INC. OR AUTHORIZATION OF THE U.S. DEPARTMENT OF COMMERCE.	THREAD CLASS: -2A, -2B CHAMFER THREADS 30° TO ROOT DIA	DRAWN: G.SCHENKER 12NOV12	EXPORT CLASSIF. EAR99 SCHEDULE B 9002.11.6000	UNLESS OTHERWISE SPECIFIED ALL DIMENSIONS ARE IN MILLIMETERS	0.0 inch 1.0 0.0 mm 25.0	QIOPTIQ Photonics for Innovation Qioptiq, Inc. 78 Schuyler Baldwin Drive Fairport, NY 14450 USA	
FINISH:			APPROVED: P.DILLON 12NOV12	HTS CODE 9002.11.6000	UNTOLERANCED DIMENSIONS .XX = ±0.13 .X = ±0.3 ANGLES = ±0°30' CONCENTRICITY=0.08 TIR BREAK ALL SHARP EDGES: 0.13 MIN, 0.26 MAX MAX SURFACE 0.8 ROUGHNESS ✓	SOLIDWORKS SHEET 1 OF 1	THIS DOCUMENT IS THE PROPRIETARY INFORMATION OF QIOPTIQ, INC. ITS USE IS AUTHORIZED ONLY FOR RESPONDING TO REQUEST FOR QUOTATION OR PERFORMANCE OF WORK FOR QIOPTIQ, INC.	
				SCALE: 1:1			TITLE: 7:1 ZOOM, STEPPER MOTORIZED OUTLINE DRAWING	
							SIZE B	DWG NO: 35-31-60-000
								REV A