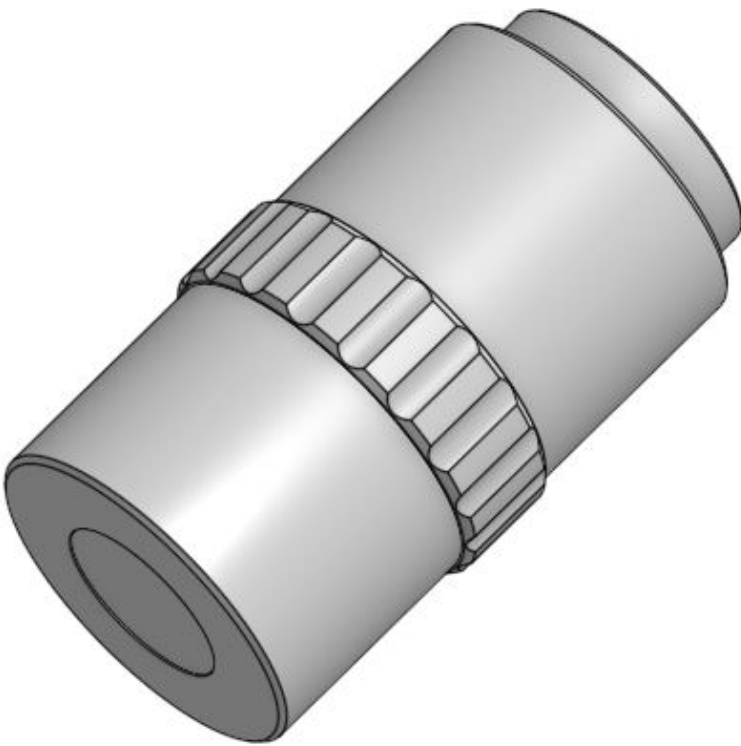
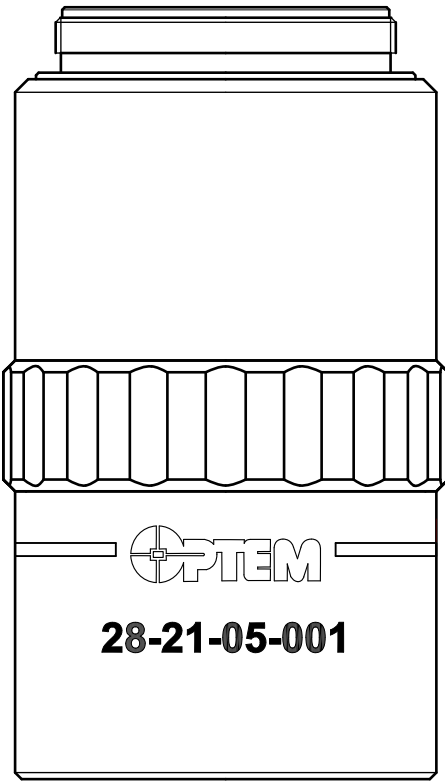
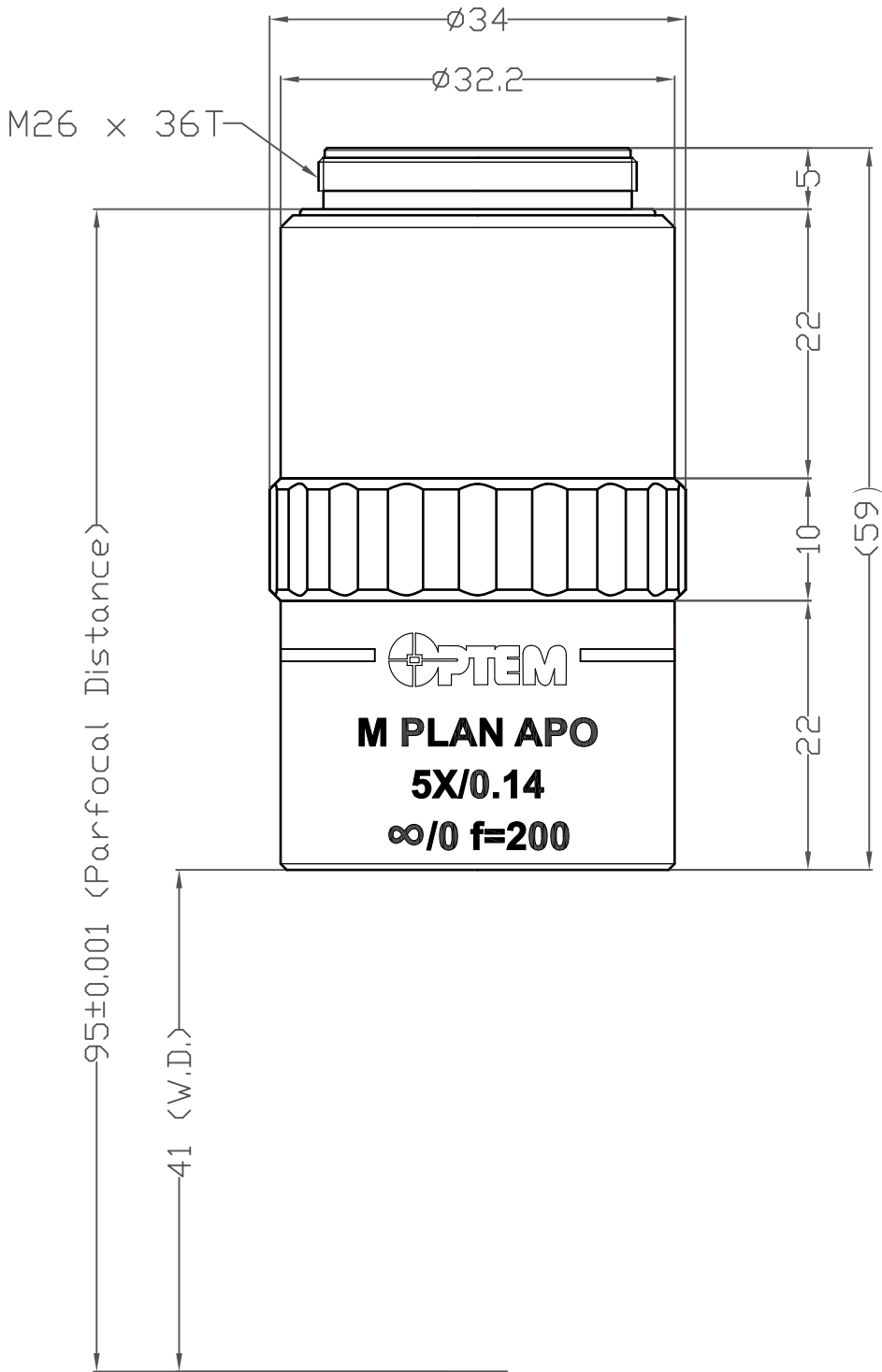


This document contains confidential and proprietary information of Excelitas Technologies.
The contents shall not be disclosed, reproduced, duplicated, disseminated or used for
purposes other than authorized in writing by Excelitas Technologies.

NOTES:

1. LWD M PLAN APO LENS SERIES DESIGNED WITH A 95mm PARFOCAL DISTANCE.



SPECIFICATIONS

PARAMETER	VALUE
Numerical Aperture	0.14
Working Distance (mm)	41
Focal Length (mm)	40
Resolution (full cycle) - $\lambda = 0.55\mu\text{m}$ (um/lp)	2.4
Depth of Field (mm)	0.029
Field of View - $\varnothing 24$ eyepiece (mm)	4.8
Mass (g)	220

UNLESS OTHERWISE SPECIFIED, DIMENSIONS ARE IN MILLIMETERS			CUSTOMER/VENDOR DOC. NO.			EXCELITAS TECHNOLOGIES® 44370 Christy Street Fremont, CA 94538		
DECIMAL .XX± 0.05 .XXX± 0.005	ANGULAR ± 0.5 °		DRAWN	M. BULK	24/05/2018			
SURFACE FINISH: 125√			CHECKED			TITLE		
DO NOT SCALE DRAWING			ENGR.			5X M PLAN APO MICROSCOPE OBJECTIVE – OUTLINE		
BREAK ALL SHARP EDGES AND REMOVE BURRS			PROJ. ENGR.					
THIRD ANGLE PROJECTION			QA			SIZE	CAGE CODE	DWG NO.
			M&P			C		28-21-05-001 OUTLINE
			MATERIAL	FINISH		SCALE	WEIGHT	REV. A
						SHEET 1 of 2		

This document contains confidential and proprietary information of Excelitas Technologies.
The contents shall not be disclosed, reproduced, duplicated, disseminated or used for
purposes other than authorized in writing by Excelitas Technologies.

5X M PLAN APO - Nominal MTF vs. Field (Object Space)

