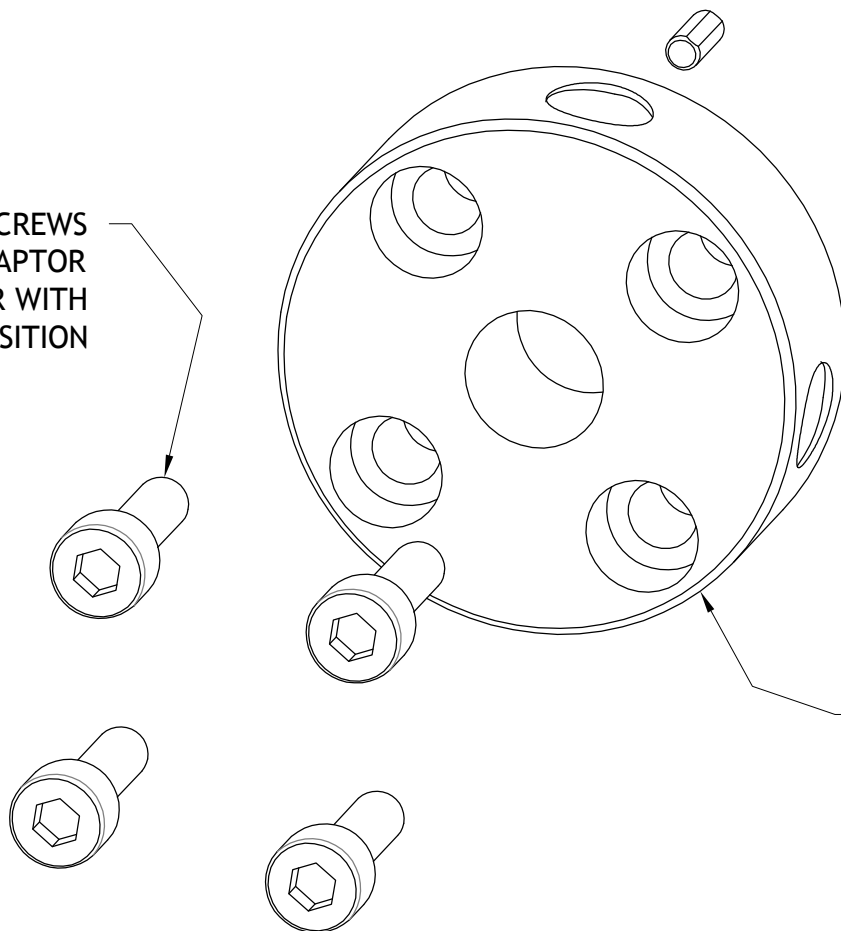


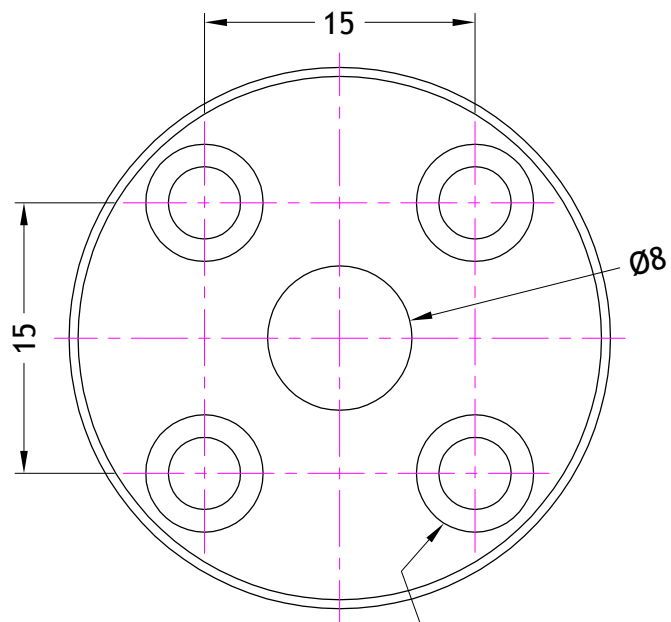
4 OFF M3x10 SOCKET CAP SCREWS
INCLUDED FOR MOUNTING THE ADAPTOR
PLATE ONTO AN iFLEX-iRIS LASER WITH
CENTRALIZED BEAM EXIT POSITION



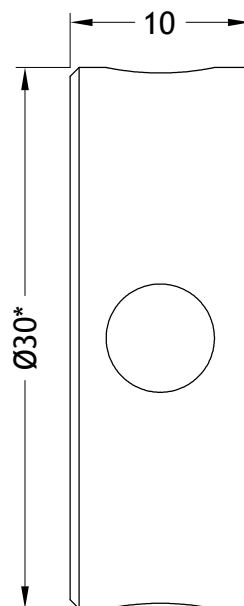
2 OFF Ø2x5 DOWEL PINS
INCLUDED FOR ACCURATE MOUNTING

iFLEX-iRIS - MICROBENCH
ADAPTOR PLATE
(SEE SHEET 2 FOR DETAILS)

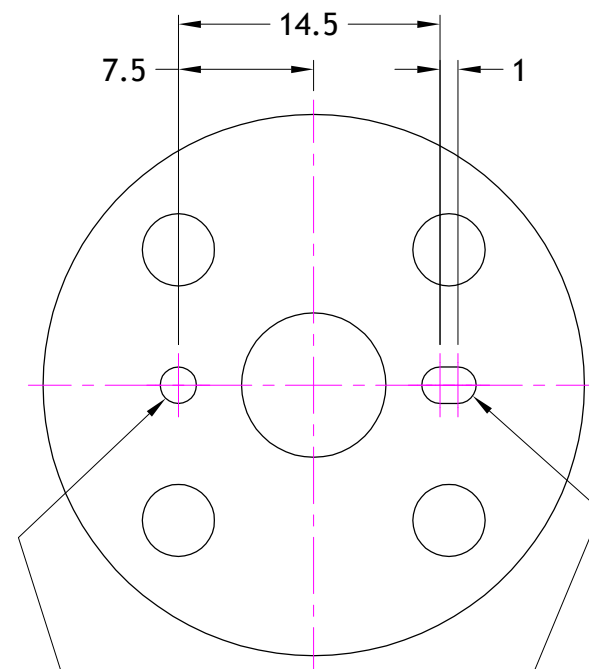
DATE	ISS	DRN	CHKD	ECN	QIOPTIQ SENSITIVE THE CONTENTS OF THIS DOCUMENT ARE CONFIDENTIAL AND SHALL NOT BE DISCLOSED TO ANY THIRD PARTY WITHOUT THE PRIOR CONSENT OF QIOPTIQ PHOTONICS LTD	QIOPTIQ Photonics for Innovation Mitchell Point, Hamble SO31 4RF Tel: +44 (0)23 8074 4500 Fax: +44 (0)23 8074 4501 ©Copyright www.qioptiq.com		TITLE: CUSTOMER DRAWING OF 014705	
01/07/15	1	BJ	AJ	25311		DRG.NO: CS014705		SHEET NO: 1/2	



COUNTERBORES FOR M3
SOCKET CAP SCREWS
IN 4 POSITIONS



Ø2.01/2.02 x 3 DEEP
DOWEL HOLE



2.01/2.02 x 3 DEEP
DOWEL SLOT

NOTES:

- 1) ADAPTOR PLATE MATERIAL: ALUMINIUM ALLOY
- 2) ADAPTOR PLATE FINISH: BLACK ANODIZED
- 3) * Ø30 CYLINDER CONNECTS TO MICROBENCH MOUNTING PLATE 30
PROVIDING ACCURATE, CONCENTRIC MOUNTING TO MICROBENCH SYSTEM

DATE	ISS	DRN	CHKD	ECN	QIOPTIQ SENSITIVE	TITLE: CUSTOMER DRAWING OF 014705	
01/07/15	1	BJ	AJ	25311	THE CONTENTS OF THIS DOCUMENT ARE CONFIDENTIAL AND SHALL NOT BE DISCLOSED TO ANY THIRD PARTY WITHOUT THE PRIOR CONSENT OF QIOPTIQ PHOTONICS LTD	DRG.NO: CS014705	SHEET NO: 2/2

QIOPTIQ
Photonics for Innovation

Mitchell Point, Hamble SO31 4RF
Tel: +44 (0)23 8074 4500
Fax: +44 (0)23 8074 4501

©Copyright
www.qioptiq.com