
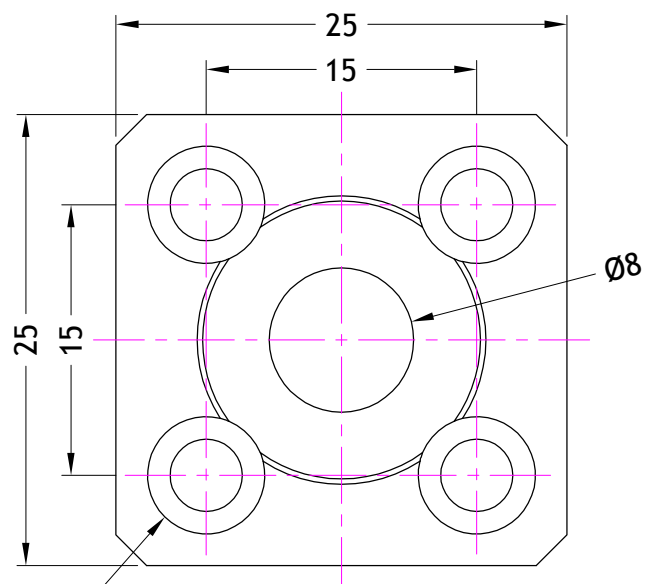


SCREWS DAPTOR ER WITH POSITION

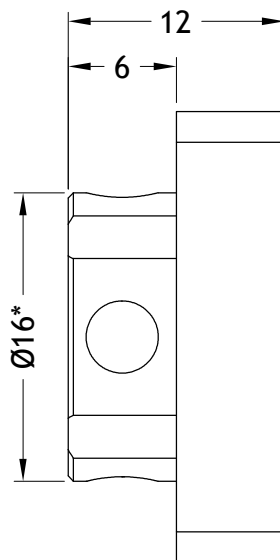
MOTOR MOUNT



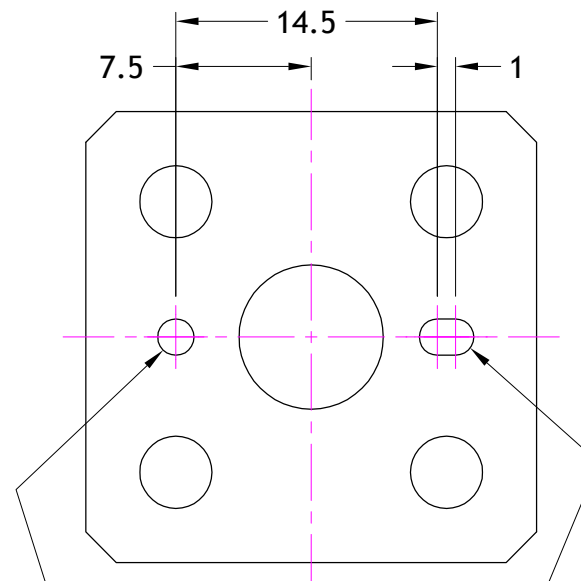
DATE	ISS	DRN	CHKD	ECN	QIOPTIQ SENSITIVE			TITLE: CUSTOMER DRAWING OF 014704	
01/07/15	1	BJ	AJ	25310	THE CONTENTS OF THIS DOCUMENT ARE CONFIDENTIAL AND SHALL NOT BE DISCLOSED TO ANY THIRD PARTY WITHOUT THE PRIOR CONSENT OF QIOPTIQ PHOTONICS LTD	Mitchell Point, Hamble SO31 4RF Tel: +44 (0)23 8074 4500 Fax: +44 (0)23 8074 4501	©Copyright www.qioptiq.com	DRG.NO: CS014704	SHEET NO: 1/2



COUNTERBORES FOR M3 SOCKET
CAP SCREWS
IN 4 POSITIONS



Ø2.01/2.02 x 3 DEEP
DOWEL HOLE



2.01/2.02 x 3 DEEP
DOWEL SLOT

NOTES:

- 1) ADAPTOR PLATE MATERIAL: ALUMINIUM ALLOY
- 2) ADAPTOR PLATE FINISH: BLACK ANODIZED
- 3) * Ø16 FEATURE CONNECTS TO NANOBENCH MOUNTING PLATE N 16
PROVIDING ACCURATE, CONCENTRIC MOUNTING TO NANOBENCH SYSTEM

DATE	ISS	DRN	CHKD	ECN	QIOPTIQ SENSITIVE		TITLE: CUSTOMER DRAWING OF 014704	
01/07/15	1	BJ	AJ	25310	THE CONTENTS OF THIS DOCUMENT ARE CONFIDENTIAL AND SHALL NOT BE DISCLOSED TO ANY THIRD PARTY WITHOUT THE PRIOR CONSENT OF QIOPTIQ PHOTONICS LTD		DRG.NO: CS014704	SHEET NO: 2/2

QIOPTIQ
Photonics for Innovation

Mitchell Point, Hamble SO31 4RF
Tel: +44 (0)23 8074 4500
Fax: +44 (0)23 8074 4501

©Copyright
www.qioptiq.com