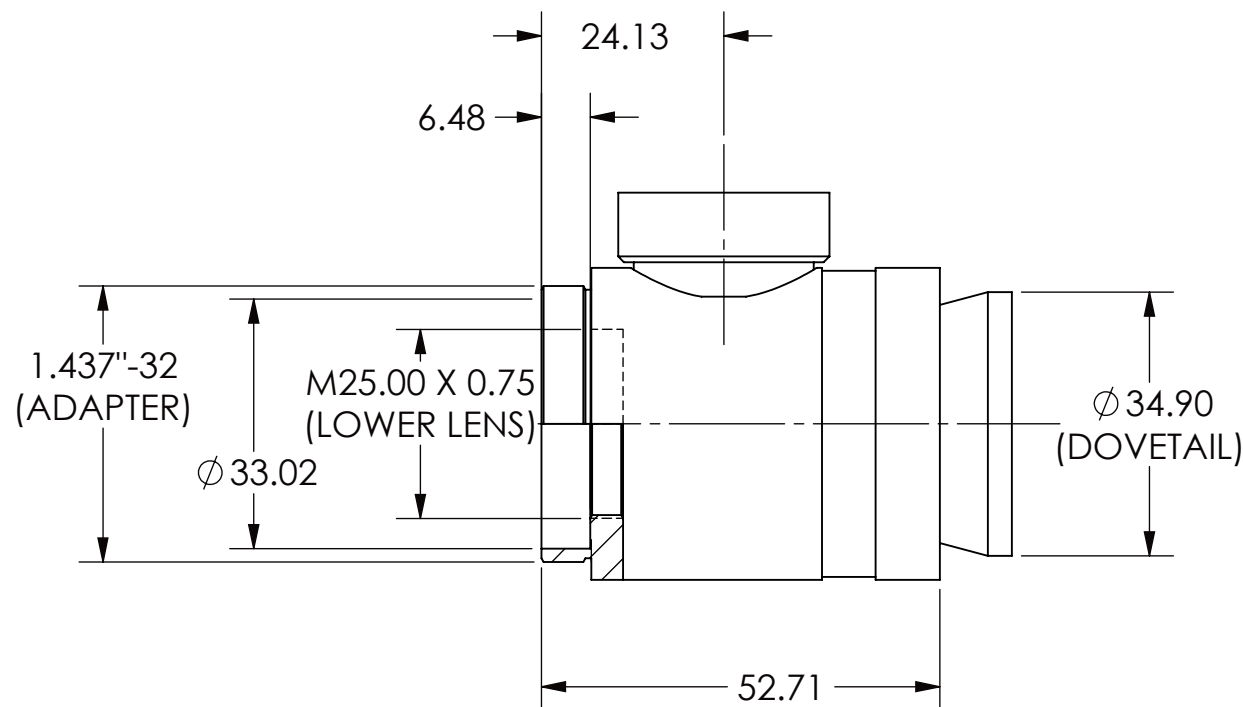
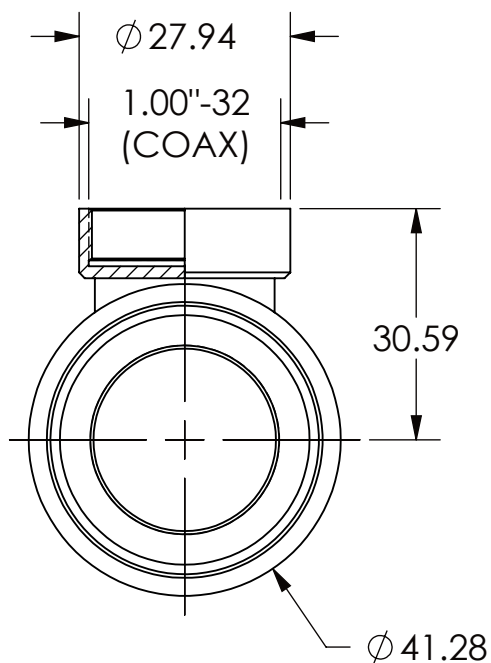


REVISIONS RECORD				
REV.	ECN	DESCRIPTION	CHG BY DATE	APR. BY DATE
A		RELEASED FOR PRODUCTION	GS 13NOV12	PD 13NOV12



ALL DIMENSIONS ARE FOR REFERENCE ONLY

EXPORT CLASSIFICATION: EAR99
SCHEDULE B: 9002.11.9000
HTS CODE: 9002.11.9000

THREAD CLASS: -6H, -6g
CHAMFER THREADS 30DEG.
TO ROOT DIA

THIS TECHNICAL DATA IS CONTROLLED UNDER THE EXPORT
ADMINISTRATION REGULATIONS AS EAR99 AND MAY NOT BE EXPORTED TO
A FOREIGN PERSON, EITHER IN THE U.S. OR ABROAD, WITHOUT THE PRIOR
WRITTEN APPROVAL OF QIOPTIQ, INC. OR AUTHORIZATION OF THE U.S.
DEPARTMENT OF COMMERCE.

MATERIAL:

DRAWN: G.SCHENKER
13 NOV 12

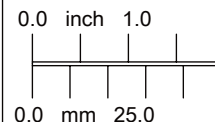
FINISH:

APPROVED: P.DILLON
13 NOV 12

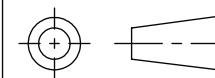
SCALE: 1:1

UNLESS OTHERWISE SPECIFIED ALL
DIMENSIONS ARE IN MILLIMETERS
AND INCLUDE CHEMICALLY
APPLIED OR PLATED FINISHES

UNTOLERANCED DIMENSIONS
.XX = ± 0.13
.X = ± 0.3
ANGLES = $\pm 0^{\circ}30'$
CONCENTRICITY = 0.08 TIR
BREAK ALL SHARP EDGES:
0.13 MIN, 0.26 MAX
MAX SURFACE
ROUGHNESS $\sqrt{0.8}$



SOLIDWORKS



SHEET 1 OF 1



Qioptiq, Inc.
78 Schuyler Baldwin Dr.
Fairport, NY 14450 USA

THIS DOCUMENT IS THE PROPRIETARY INFORMATION OF QIOPTIQ, INC.
ITS USE IS AUTHORIZED ONLY FOR RESPONDING TO REQUEST
FOR QUOTATION OR PERFORMANCE OF WORK FOR QIOPTIQ, INC.

TITLE:

**COAX ILLUMINATION
OUTLINE DRAWING**

SIZE
A

DWG. NO.
35-04-00-000

REV.
A