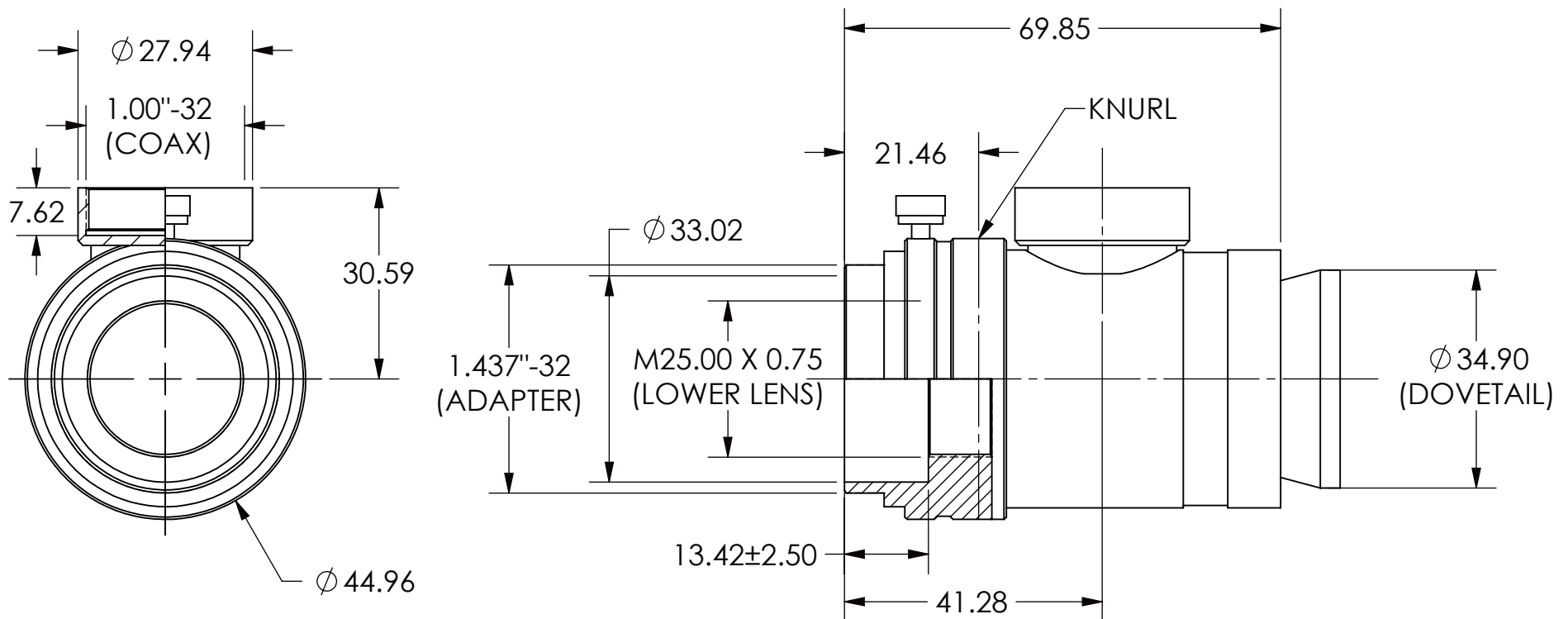


REVISIONS RECORD				
REV.	ECN	DESCRIPTION	CHG BY DATE	APR. BY DATE
A		RELEASED FOR PRODUCTION	GS 13NOV12	PD 13NOV12



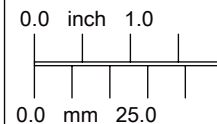
**ALL DIMENSIONS ARE FOR REFERENCE ONLY**

EXPORT CLASSIFICATION: EAR99  
SCHEDULE B: 9002.11.9000  
HTS CODE: 9002.11.9000

THREAD CLASS: -6H, -6g  
CHAMFER THREADS 30DEG.  
TO ROOT DIA

UNLESS OTHERWISE SPECIFIED ALL  
DIMENSIONS ARE IN MILLIMETERS  
AND INCLUDE CHEMICALLY  
APPLIED OR PLATED FINISHES

UNTOLERANCED DIMENSIONS  
.XX =  $\pm 0.13$   
.X =  $\pm 0.3$   
ANGLES =  $\pm 0^{\circ}30'$   
CONCENTRICITY = 0.08 TIR  
BREAK ALL SHARP EDGES:  
0.13 MIN, 0.26 MAX  
MAX SURFACE  
ROUGHNESS  $0.8 \sqrt{\text{ }}$



**Qioptiq, Inc.**  
78 Schuyler Baldwin Dr.  
Fairport, NY 14450 USA

THIS DOCUMENT IS THE PROPRIETARY INFORMATION OF QIOPTIQ, INC.  
ITS USE IS AUTHORIZED ONLY FOR RESPONDING TO REQUEST  
FOR QUOTATION OR PERFORMANCE OF WORK FOR QIOPTIQ, INC.

THIS TECHNICAL DATA IS CONTROLLED UNDER THE EXPORT  
ADMINISTRATION REGULATIONS AS EAR99 AND MAY NOT BE EXPORTED TO  
A FOREIGN PERSON, EITHER IN THE U.S. OR ABROAD, WITHOUT THE PRIOR  
WRITTEN APPROVAL OF QIOPTIQ, INC. OR AUTHORIZATION OF THE U.S.  
DEPARTMENT OF COMMERCE.

MATERIAL:

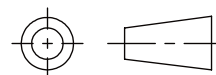
DRAWN: G.SCHENKER  
13 NOV 12

FINISH:

APPROVED: P.DILLON  
13 NOV 12

SCALE: 1:1

SOLIDWORKS



SHEET 1 OF 1

**TITLE: COAX ILLUMINATION, 5mm FOCUS  
W/ ANALYZER, OUTLINE DRAWING**

SIZE  
**A**

DWG. NO.  
**35-04-10-000**

REV.  
**A**