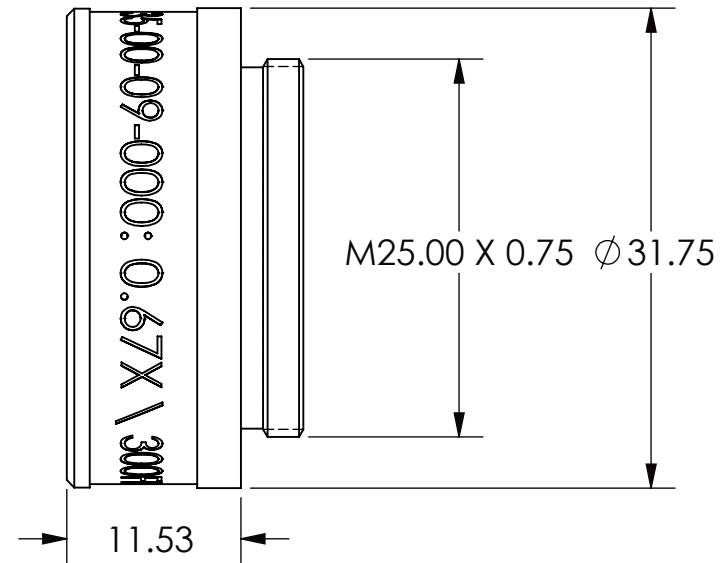
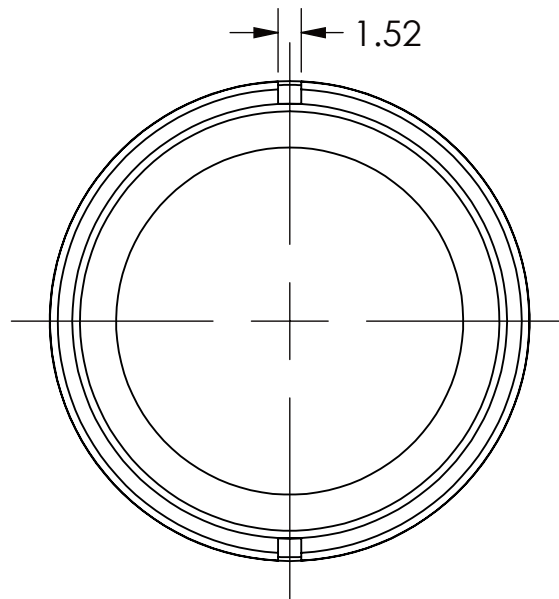
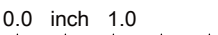




REVISIONS RECORD				
REV.	ECN	DESCRIPTION	CHG BY DATE	APR. BY DATE
A		RELEASED	GS 9NOV12	PD 9NOV12



ALL DIMENSIONS ARE FOR REFERENCE ONLY

EXPORT CLASSIFICATION: EAR99		THREAD CLASS: -6H, -6g CHAMFER THREADS 30DEG. TO ROOT DIA	UNLESS OTHERWISE SPECIFIED ALL DIMENSIONS ARE IN MILLIMETERS AND INCLUDE CHEMICALLY APPLIED OR PLATED FINISHES UNTOLERANCED DIMENSIONS .XX = ±0.13 .X = ±0.3 ANGLES = ±0°30' CONCENTRICITY=0.08 TIR BREAK ALL SHARP EDGES: 0.13 MIN, 0.26 MAX MAX SURFACE 0.8 ROUGHNESS		 Qioptiq, Inc. 78 Schuyler Baldwin Dr. Fairport, NY 14450 USA			
SCHEDULE B: 9002.11.6000					THIS DOCUMENT IS THE PROPRIETARY INFORMATION OF QIOPTIQ, INC. ITS USE IS AUTHORIZED ONLY FOR RESPONDING TO REQUEST FOR QUOTATION OR PERFORMANCE OF WORK FOR QIOPTIQ, INC.			
HTS CODE: 9002.11.6000								
THIS TECHNICAL DATA IS CONTROLLED UNDER THE EXPORT ADMINISTRATION REGULATIONS AS EAR99 AND MAY NOT BE EXPORTED TO A FOREIGN PERSON, EITHER IN THE U.S. OR ABROAD, WITHOUT THE PRIOR WRITTEN APPROVAL OF QIOPTIQ, INC. OR AUTHORIZATION OF THE U.S. DEPARTMENT OF COMMERCE.					SOLIDWORKS			
								
MATERIAL:		DRAWN: G.SCHENKER 9 NOV 12	TITLE: 0.67X \ 300FL LOWER LENS OUTLINE DRAWING			SIZE A	DWG. NO. 35-00-09-000	REV. A
FINISH:		APPROVED: P.DILLON 9 NOV 12						
		SCALE: 2:1	SHEET 1 OF 1					