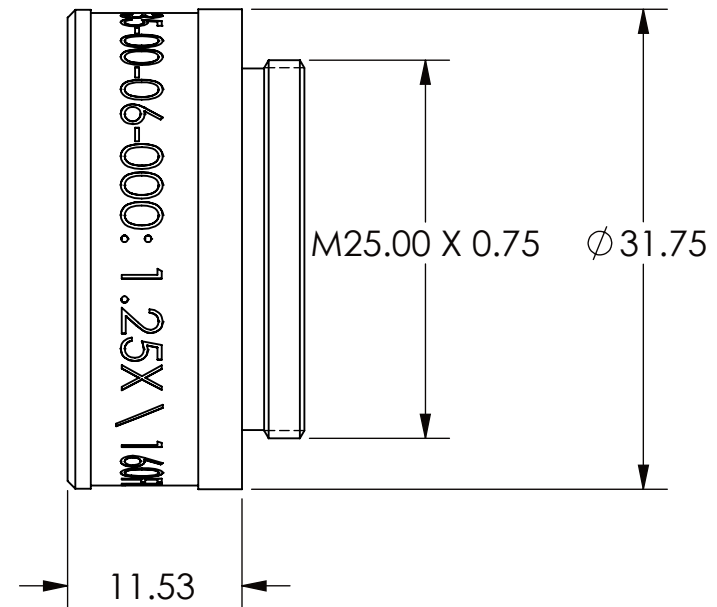
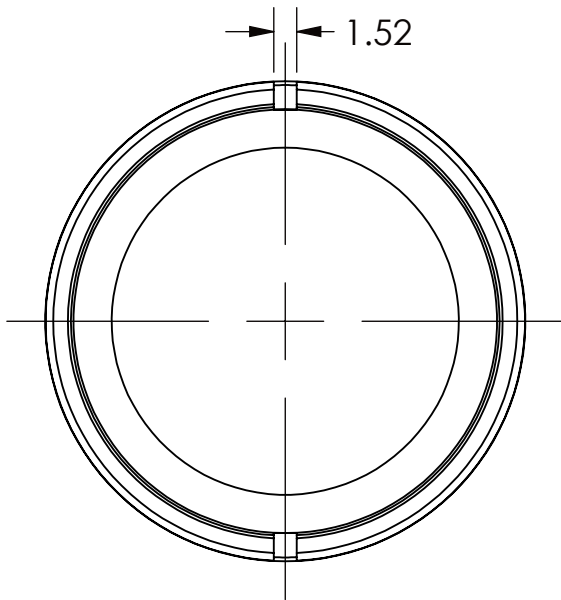
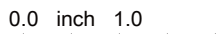




REVISIONS RECORD				
REV.	ECN	DESCRIPTION	CHG BY DATE	APR. BY DATE
A		RELEASED	GS 9NOV12	PD 9NOV12



ALL DIMENSIONS ARE FOR REFERENCE ONLY

EXPORT CLASSIFICATION: EAR99 SCHEDULE B: 9002.11.6000 HTS CODE: 9002.11.6000		THREAD CLASS: -6H, -6g CHAMFER THREADS 30DEG. TO ROOT DIA	UNLESS OTHERWISE SPECIFIED ALL DIMENSIONS ARE IN MILLIMETERS AND INCLUDE CHEMICALLY APPLIED OR PLATED FINISHES UNTOLERANCED DIMENSIONS .XX = ±0.13 .X = ±0.3 ANGLES = ±0°30' CONCENTRICITY=0.08 TIR BREAK ALL SHARP EDGES: 0.13 MIN, 0.26 MAX MAX SURFACE ROUGHNESS $\sqrt{0.8}$		 Qioptiq, Inc. 78 Schuyler Baldwin Dr. Fairport, NY 14450 USA		
THIS TECHNICAL DATA IS CONTROLLED UNDER THE EXPORT ADMINISTRATION REGULATIONS AS EAR99 AND MAY NOT BE EXPORTED TO A FOREIGN PERSON, EITHER IN THE U.S. OR ABROAD, WITHOUT THE PRIOR WRITTEN APPROVAL OF QIOPTIQ, INC. OR AUTHORIZATION OF THE U.S. DEPARTMENT OF COMMERCE.				THIS DOCUMENT IS THE PROPRIETARY INFORMATION OF QIOPTIQ, INC. ITS USE IS AUTHORIZED ONLY FOR RESPONDING TO REQUEST FOR QUOTATION OR PERFORMANCE OF WORK FOR QIOPTIQ, INC.			
MATERIAL:	DRAWN: G.SCHENKER 9NOV12			SOLIDWORKS	TITLE: 1.25X \ 160FL LOWER LENS OUTLINE DRAWING		
FINISH:	APPROVED: P.DILLON 9NOV12 SCALE: 2:1			 SHEET 1 OF 1	SIZE A	DWG. NO. 35-00-06-000	REV. A