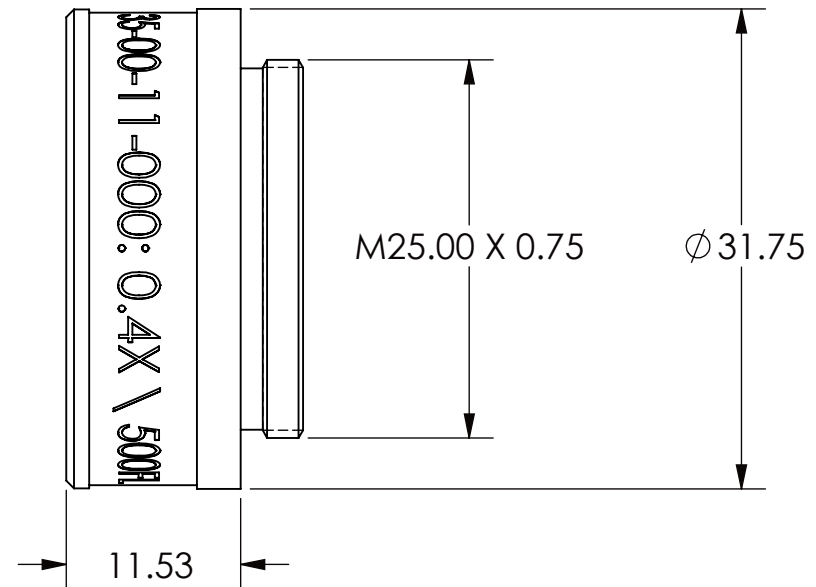
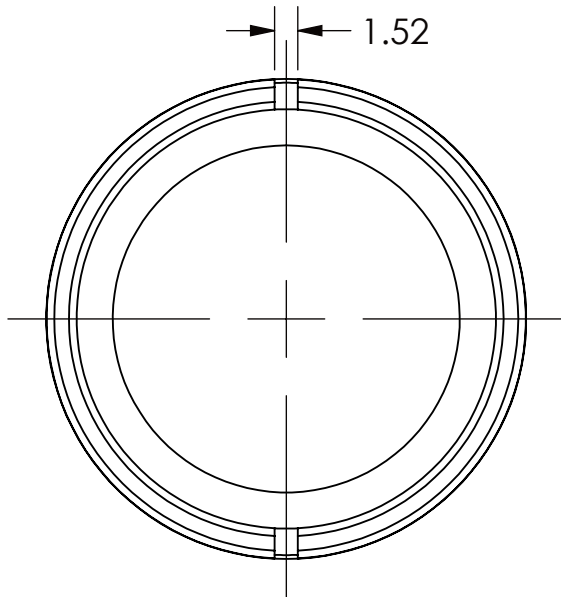
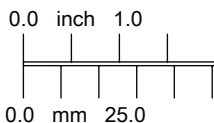

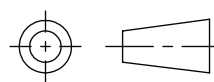


REVISIONS RECORD				
REV.	ECN	DESCRIPTION	CHG BY DATE	APR. BY DATE
A		RELEASED FOR PRODUCTION	GS 9NOV12	PD 9NOV12



ALL DIMENSIONS ARE FOR REFERENCE ONLY

EXPORT CLASSIFICATION: EAR99		THREAD CLASS: -6H, -6g CHAMFER THREADS 30DEG. TO ROOT DIA	UNLESS OTHERWISE SPECIFIED ALL DIMENSIONS ARE IN MILLIMETERS AND INCLUDE CHEMICALLY APPLIED OR PLATED FINISHES		 Qioptiq, Inc. 78 Schuyler Baldwin Dr. Fairport, NY 14450 USA		
SCHEDULE B: 9002.11.6000							
HTS CODE: 6002.11.6000					THIS DOCUMENT IS THE PROPRIETARY INFORMATION OF QIOPtiQ, INC. ITS USE IS AUTHORIZED ONLY FOR RESPONDING TO REQUEST FOR QUOTATION OR PERFORMANCE OF WORK FOR QIOPtiQ, INC.		
THIS TECHNICAL DATA IS CONTROLLED UNDER THE EXPORT ADMINISTRATION REGULATIONS AS EAR99 AND MAY NOT BE EXPORTED TO A FOREIGN PERSON, EITHER IN THE U.S. OR ABROAD, WITHOUT THE PRIOR WRITTEN APPROVAL OF QIOPtiQ, INC. OR AUTHORIZATION OF THE U.S. DEPARTMENT OF COMMERCE.			UNTOLERANCED DIMENSIONS .XX = ± 0.13 .X = ± 0.3 ANGLES = $\pm 0^{\circ}30'$ CONCENTRICITY=0.08 TIR BREAK ALL SHARP EDGES: 0.13 MIN, 0.26 MAX MAX SURFACE ROUGHNESS $\sqrt{0.8}$	SOLIDWORKS	TITLE: 0.4X \ 500FL LOWER LENS OUTLINE DRAWING		
MATERIAL:	DRAWN: G.SCHENKER 9 NOV 12				SIZE	DWG. NO.	REV.
FINISH:	APPROVED: P.DILLON 9 NOV 12			SHEET 1 OF 1	A	35-00-11-000	A
	SCALE: 2:1						

MODEL NAME:35-00-11-000 OUTLINE.SLDPRT

FILE NAME: 35-00-11-000 OUTLINE.SLDRW