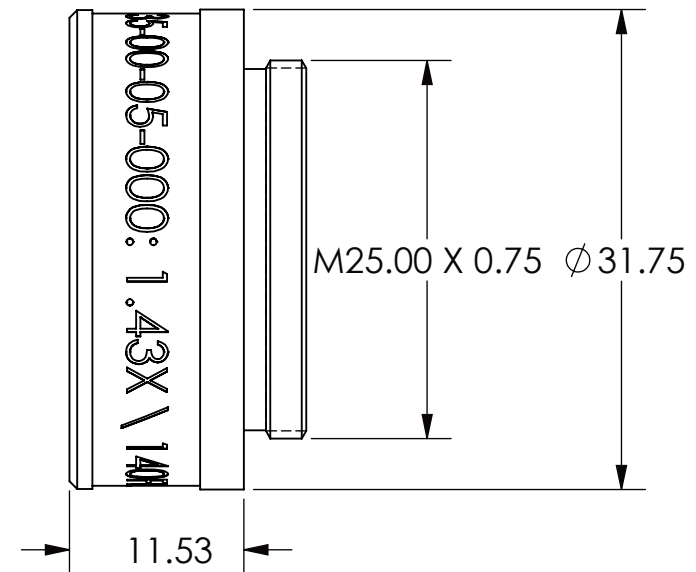
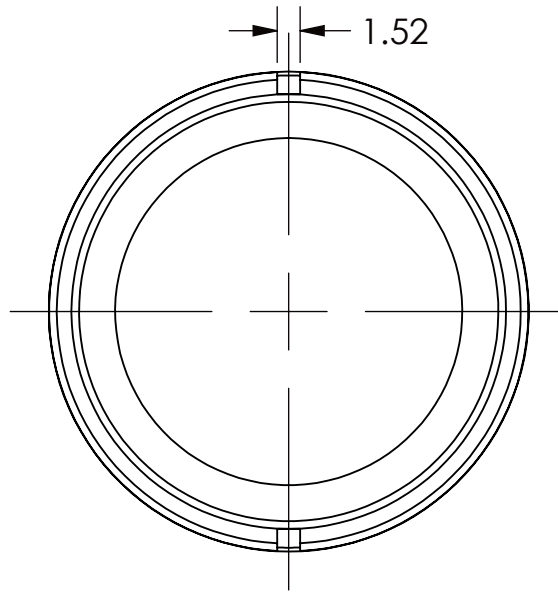


REVISIONS RECORD				
REV.	ECN	DESCRIPTION	CHG BY DATE	APR. BY DATE
A		RELEASED	GS 8NOV12	PD 8NOV12



DIMENSIONS ARE FOR REFERENCE ONLY

EXPORT CLASSIFICATION: EAR99		THREAD CLASS: -6H, -6g CHAMFER THREADS 30DEG. TO ROOT DIA	UNLESS OTHERWISE SPECIFIED ALL DIMENSIONS ARE IN MILLIMETERS AND INCLUDE CHEMICALLY APPLIED OR PLATED FINISHES UNTOLERANCED DIMENSIONS .XX = ±0.13 .X = ±0.3 ANGLES = ±0°30' CONCENTRICITY=0.08 TIR BREAK ALL SHARP EDGES: 0.13 MIN, 0.26 MAX MAX SURFACE 0.8 ROUGHNESS				
SCHEDULE B: 9002.11.6000					THIS DOCUMENT IS THE PROPRIETARY INFORMATION OF QIOPTIQ, INC. ITS USE IS AUTHORIZED ONLY FOR RESPONDING TO REQUEST FOR QUOTATION OR PERFORMANCE OF WORK FOR QIOPTIQ, INC.		
HTS CODE: 9002.11.6000		THIS TECHNICAL DATA IS CONTROLLED UNDER THE EXPORT ADMINISTRATION REGULATIONS AS EAR99 AND MAY NOT BE EXPORTED TO A FOREIGN PERSON, EITHER IN THE U.S. OR ABROAD, WITHOUT THE PRIOR WRITTEN APPROVAL OF QIOPTIQ, INC. OR AUTHORIZATION OF THE U.S. DEPARTMENT OF COMMERCE.		SOLIDWORKS	TITLE: 1.43X \ 140FL LOWER LENS OUTLINE DRAWING		
MATERIAL:	DRAWN: G.SCHENKER 8NOV12				SIZE A	DWG. NO. 35-00-05-000	REV. A
FINISH:	APPROVED: P.DILLON 8NOV12 SCALE: 2:1		SHEET 1 OF 1				