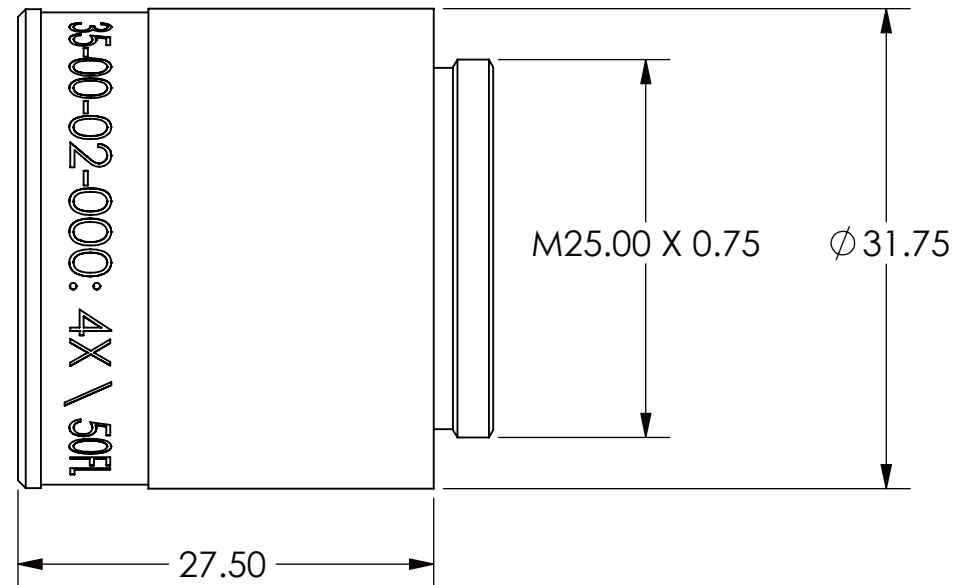
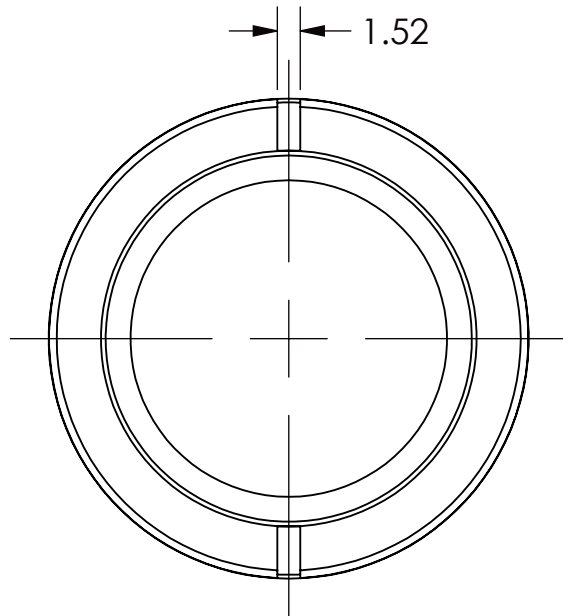


REVISIONS RECORD				
REV.	ECN	DESCRIPTION	CHG BY DATE	APR. BY DATE
A		RELEASED	GS 8NOV12	PD 8NOV12



DIMENSIONS ARE FOR REFERENCE ONLY

EXPORT CLASSIFICATION: EAR99  
SCHEDULE B: 9002.11.6000  
HTS CODE: 9002.11.6000

THREAD CLASS: -6H, -6g  
CHAMFER THREADS 30DEG.  
TO ROOT DIA

THIS TECHNICAL DATA IS CONTROLLED UNDER THE EXPORT  
ADMINISTRATION REGULATIONS AS EAR99 AND MAY NOT BE EXPORTED TO  
A FOREIGN PERSON, EITHER IN THE U.S. OR ABROAD, WITHOUT THE PRIOR  
WRITTEN APPROVAL OF QIOPTIQ, INC. OR AUTHORIZATION OF THE U.S.  
DEPARTMENT OF COMMERCE.

MATERIAL:

DRAWN: G.SCHENKER  
8NOV12

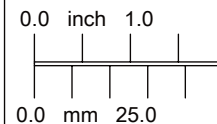
FINISH:

APPROVED: P.DILLON  
8NOV12

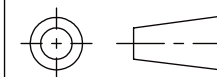
SCALE: 2:1

UNLESS OTHERWISE SPECIFIED ALL  
DIMENSIONS ARE IN MILLIMETERS  
AND INCLUDE CHEMICALLY  
APPLIED OR PLATED FINISHES

UNTOLERANCED DIMENSIONS  
.XX =  $\pm 0.13$   
.X =  $\pm 0.3$   
ANGLES =  $\pm 0^{\circ}30'$   
CONCENTRICITY = 0.08 TIR  
BREAK ALL SHARP EDGES:  
0.13 MIN, 0.26 MAX  
MAX SURFACE  
ROUGHNESS  $\sqrt{0.8}$



SOLIDWORKS



SHEET 1 OF 1



**Qioptiq, Inc.**  
78 Schuyler Baldwin Dr.  
Fairport, NY 14450 USA

THIS DOCUMENT IS THE PROPRIETARY INFORMATION OF QIOPTIQ, INC.  
ITS USE IS AUTHORIZED ONLY FOR RESPONDING TO REQUEST  
FOR QUOTATION OR PERFORMANCE OF WORK FOR QIOPTIQ, INC.

TITLE:

**4X \ 50FL LOWER LENS  
OUTLINE DRAWING**

SIZE  
**A**

DWG. NO.

**35-00-02-000**

REV.  
**A**