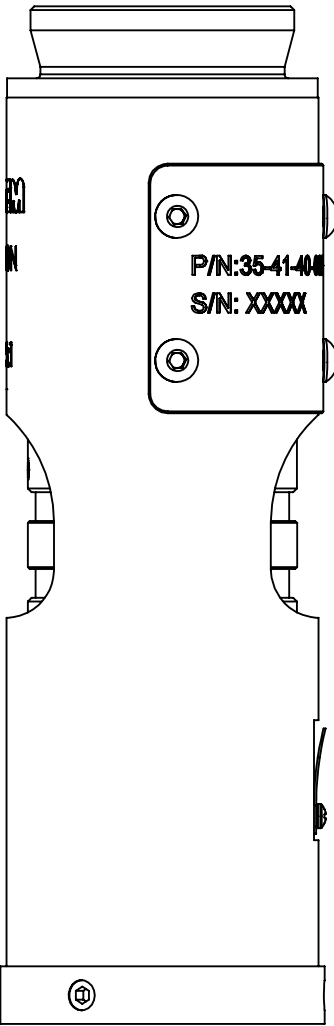
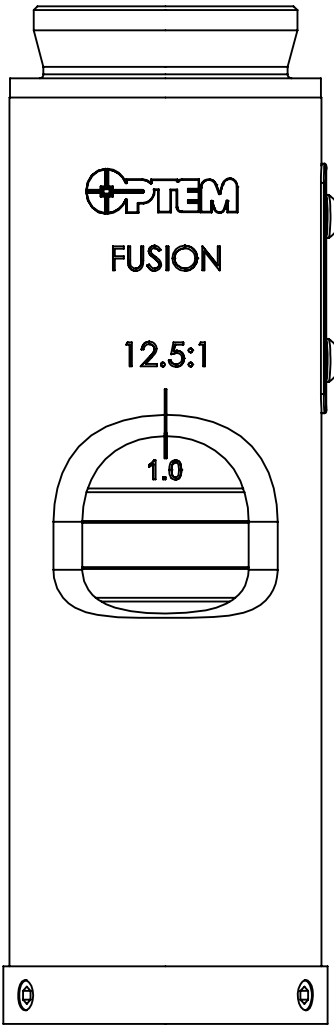
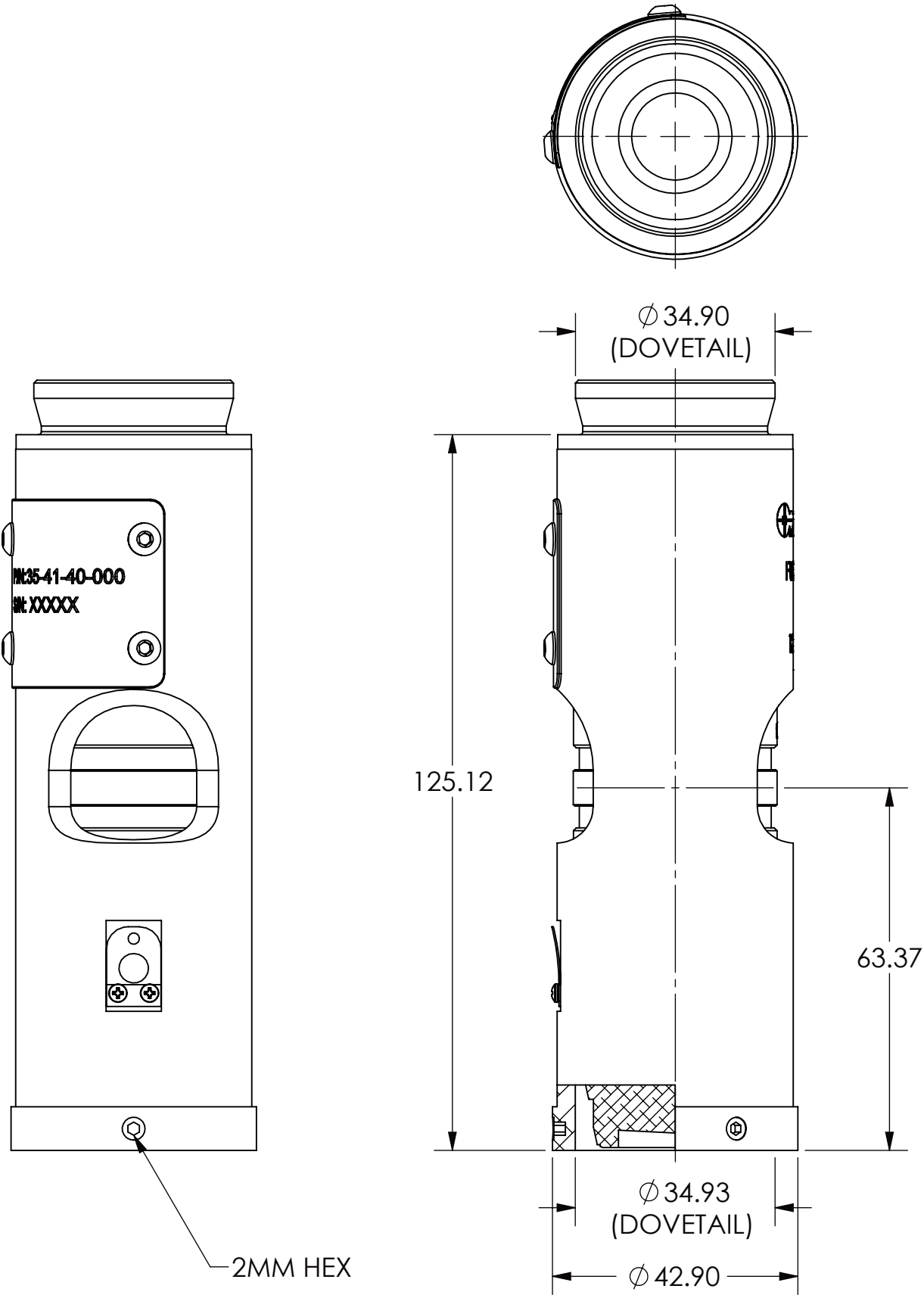


REVISIONS RECORD				
REV.	ECN	DESCRIPTION	CHG BY DATE	APR. BY DATE
A		RELEASED	GS 13NOV12	PD 13NOV12

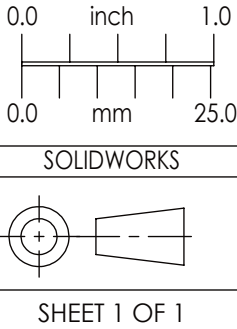
ALL DIMENSIONS ARE FOR REFERENCE ONLY



EXPORT CLASSIF. EAR99
SCHEDULE B 9002.11.6000
HTS CODE 9002.11.6000
SCALE: 1:1

UNLESS OTHERWISE SPECIFIED
ALL DIMENSIONS ARE IN
MILLIMETERS

UNTOLERANCED DIMENSIONS
.XX = ± 0.13
.X = ± 0.3
ANGLES = $\pm 0^{\circ}30'$
CONCENTRICITY = 0.08 TIR
BREAK ALL SHARP EDGES:
0.13 MIN, 0.26 MAX
MAX SURFACE
ROUGHNESS 0.8



QIOPTIQ Qioptiq, Inc. 78 Schuyler Baldwin Drive Fairport, NY 14450 USA		
THIS DOCUMENT IS THE PROPRIETARY INFORMATION OF QIOPTIQ, INC. ITS USE IS AUTHORIZED ONLY FOR RESPONDING TO REQUEST FOR QUOTATION OR PERFORMANCE OF WORK FOR QIOPTIQ, INC.		
TITLE: 12.5:1 ZOOM, DETENT OUTLINE DRAWING		
SIZE B	DWG NO: 35-41-40-000	REV A

MATERIAL:	THIS TECHNICAL DATA IS CONTROLLED UNDER THE EXPORT ADMINISTRATION REGULATIONS AS EAR99 AND MAY NOT BE EXPORTED TO A FOREIGN PERSON, EITHER IN THE U.S. OR ABROAD, WITHOUT THE PRIOR WRITTEN APPROVAL OF QIOPTIQ, INC. OR AUTHORIZATION OF THE U.S. DEPARTMENT OF COMMERCE.	THREAD CLASS: -2A, -2B CHAMFER THREADS 30° TO ROOT DIA	DRAWN: G.SCHENKER 13NOV12 APPROVED: P.DILLON 13NOV12	EXPORT CLASSIF. EAR99 SCHEDULE B 9002.11.6000 HTS CODE 9002.11.6000 SCALE: 1:1
FINISH:				