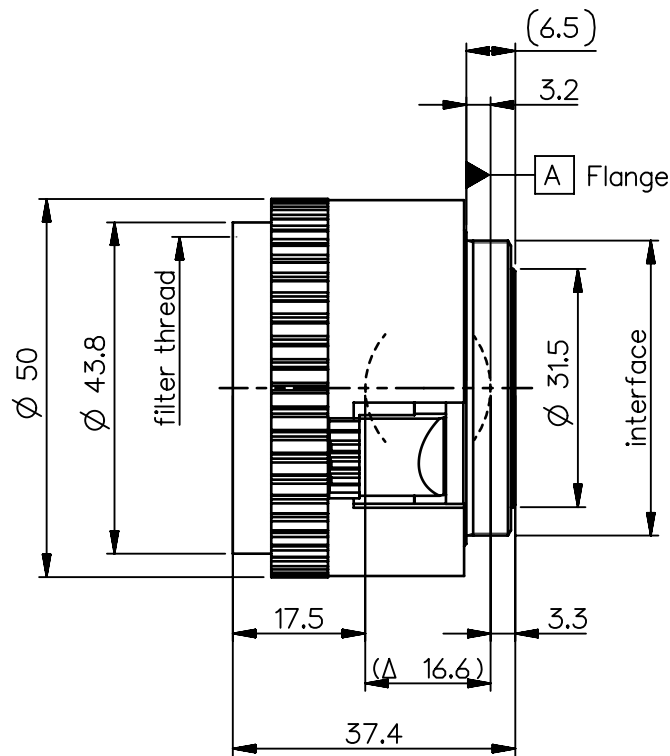


order number	lens name
0701-401-000-40	Rodagon 4/35

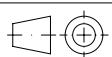


<b>Specification</b>		ON	7404-9001
image circle max. (mm)	40	working distance (mm)	184 - 1178
focal length $f'$ (mm)	35.1	interface	M39 x1/26" (Leica)
magnification $\beta'$ [range]	-0.05 [-0.2 ... -0.03]	filter thread	M40.5 x0.5
spectral range $\lambda$ (nm)	400 - 750	weight (g)	85

schematic diagram		*) in air		
design includes CCD cover glass:		no		
SF (mm)	-26.5	f-stop	$\varnothing$ EnP	$\varnothing$ Exp
S'F' (mm) *)	27.2	4	8.8	9.0
HH' (mm) *)	0.11	5.6	6.3	6.4
SH (mm)	8.6	8	4.4	4.5
S'H' (mm) *)	-7.9	11	3.2	3.3
SEnP (mm)	7.7	16	2.2	2.3
S'Exp (mm) *)	-8.8			

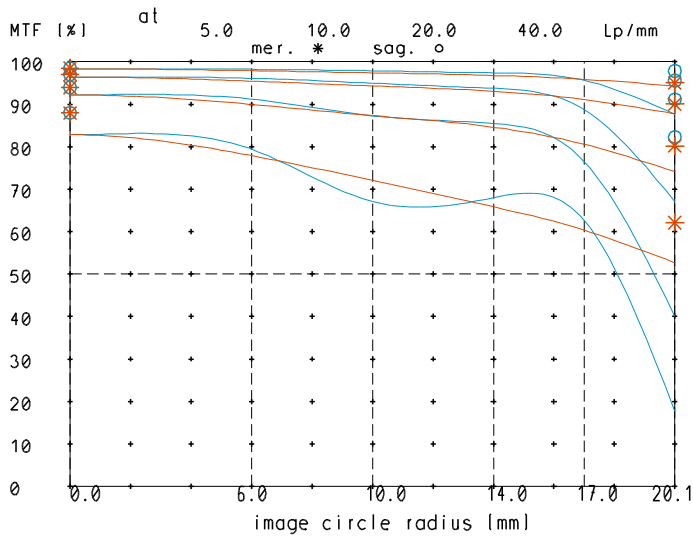
<b>NX</b> PROTECTIVE NOTE "DIN ISO 16016" TO BE OBSERVED	EU-D	AL-T1A	US-D	US-ML	not export controlled	
	REV	ECC	DATE	APPROVED	PDM Status	
	a	Neuausg	08.06.15	K-Jancec	Freigabe	-
	b	21-0644	26.07.21	Maier	SCALE	1:1
				MATERIAL		
				TITLE	Rodagon 4/35	
				DRAWING NO.	0701-401-100-40-0001b	
				REPLACES		
					SHEET 1 OF 1	

ALL DIMENSIONS ARE IN MM AND INCLUDE SURFACE TREATMENT

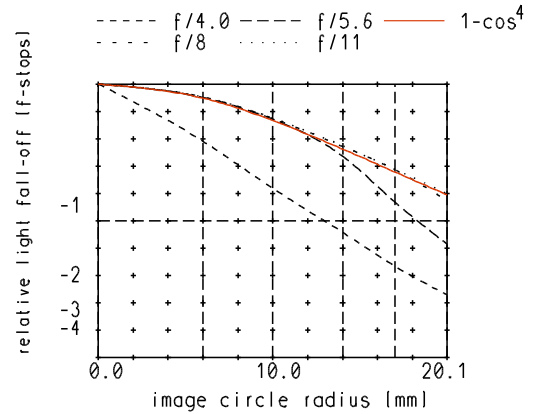


# Rodagon\_4/35

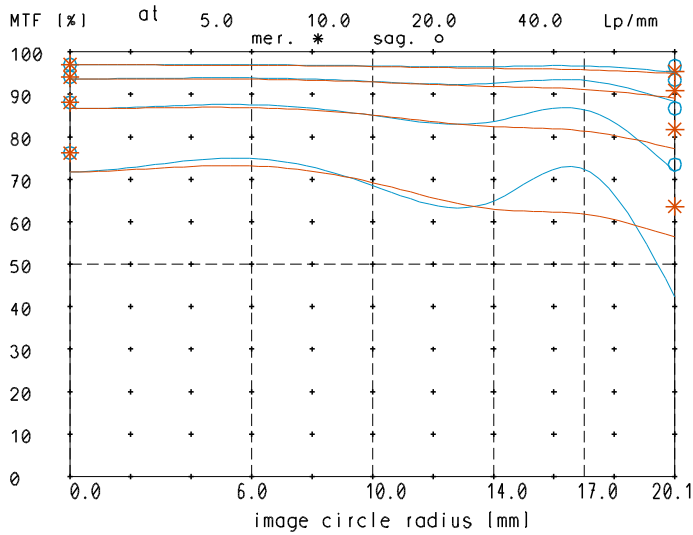
MTF at ratio -0.05 f/ 4.0



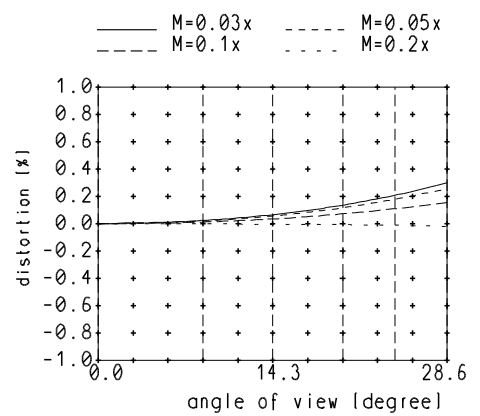
relative light fall-off at ratio -0.05



MTF at ratio -0.05 f/ 8

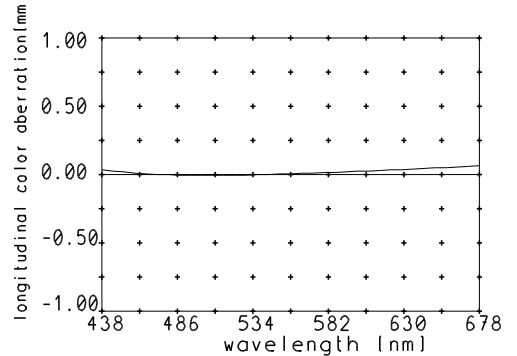


Distortion at ratio 0.03x to 0.2x



— sagittal. o Diffraction limited value  
 — meridional \* Diffraction limited value

Longitudinal color aberration at ratio -0.05



Named frequencies (line pairs/mm) in modular transfer function (MTF) as well as diagrams of relative light fall-off, distortion and longitudinal color aberration refer to film plane.