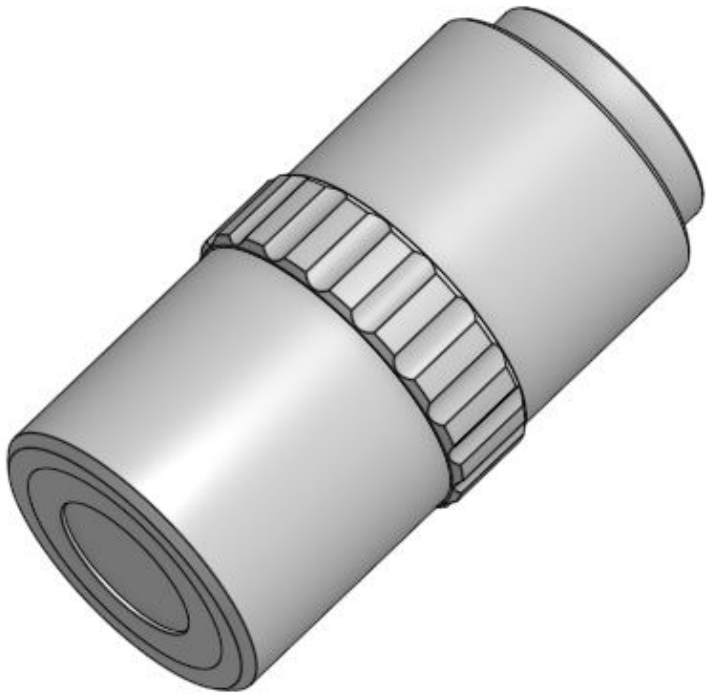
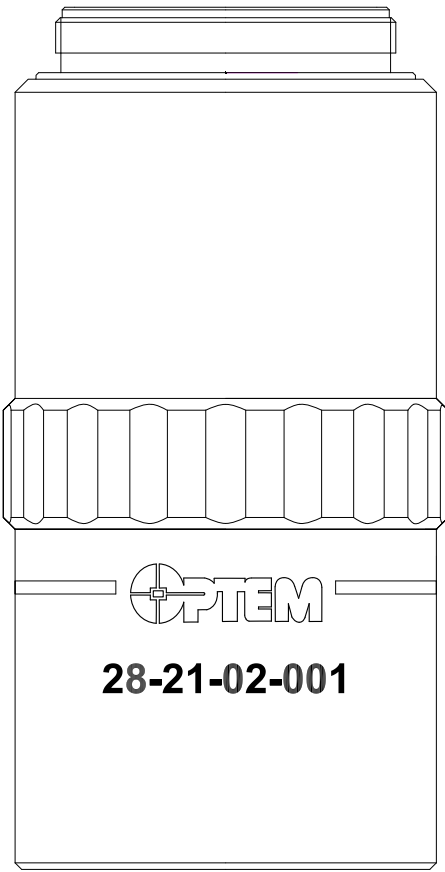
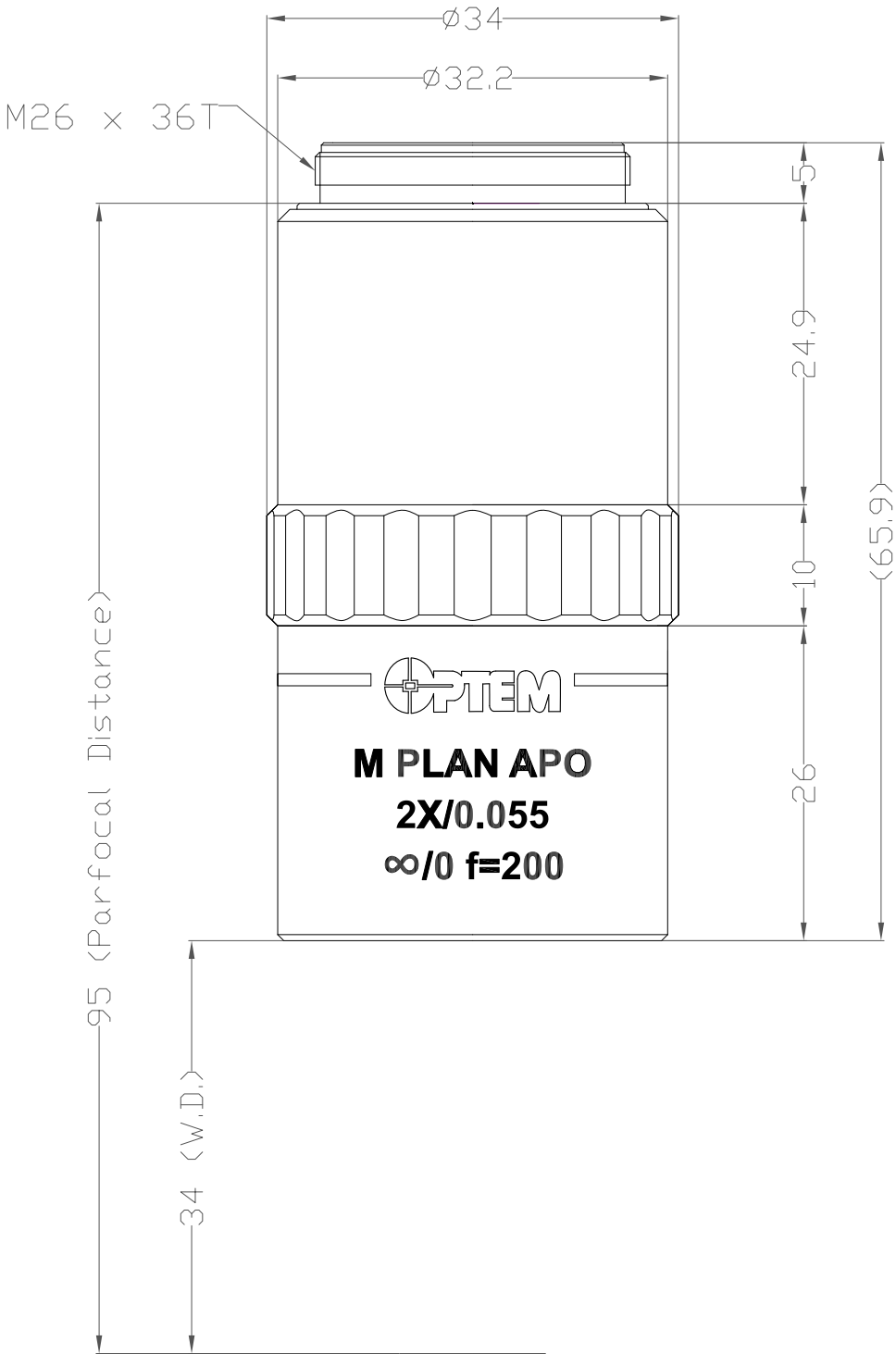


This document contains confidential and proprietary information of Excelitas Technologies.
The contents shall not be disclosed, reproduced, duplicated, disseminated or used for
purposes other than authorized in writing by Excelitas Technologies.

NOTES:

1. LWD M PLAN APO LENS SERIES DESIGNED WITH A 95mm PARFOCAL DISTANCE.



SPECIFICATIONS

PARAMETER	VALUE
Numerical Aperture	0.055
Working Distance (mm)	34
Focal Length (mm)	100
Resolution (full cycle) - $\lambda = 0.55\mu\text{m}$ (um/lp)	6.1
Depth of Field (mm)	0.18
Field of View - Ø24 eyepiece (mm)	12
Mass (g)	223

UNLESS OTHERWISE SPECIFIED, DIMENSIONS ARE IN MILLIMETERS			CUSTOMER/VENDOR DOC. NO.			EXCELITAS TECHNOLOGIES® 44370 Christy Street Fremont, CA 94538		
DECIMAL .XX± 0.05 .XXX± 0.005	ANGULAR ± 0.5 °		DRAWN	M. BULK	24/05/2018	TITLE 2X M PLAN APO MICROSCOPE OBJECTIVE – OUTLINE		
SURFACE FINISH: 125√			CHECKED					
DO NOT SCALE DRAWING			ENGR.					
BREAK ALL SHARP EDGES AND REMOVE BURRS			PROJ. ENGR.					
THIRD ANGLE PROJECTION			QA			SIZE C CAGE CODE DWG NO. 28-21-02-001 OUTLINE REV. A		
MATERIAL			M&P			SCALE WEIGHT SHEET 1 of 2		
FINISH								

This document contains confidential and proprietary information of Excelitas Technologies.
The contents shall not be disclosed, reproduced, duplicated, disseminated or used for
purposes other than authorized in writing by Excelitas Technologies.

2X M PLAN APO - Nominal MTF vs. Field (Object Space)

