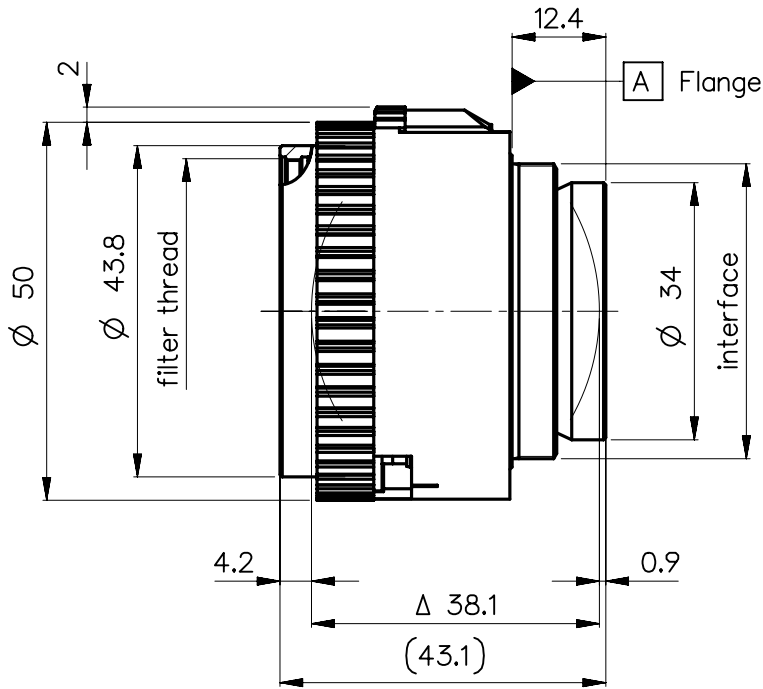
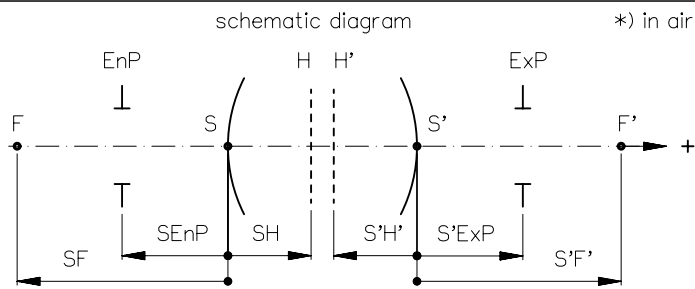


order number	lens name
0701-398-000-40	Rodagon 5.6/135



Specification		ON	7461-9001
image circle max. (mm)	105	working distance (mm)	385 - 1475
focal length f' (mm) *	136.2	interface	M39 x1/26" (Leica)
magnification β' [range]	-0.2 [-0.5 ... -0.1]	filter thread	M40.5 x0.5
spectral range λ (nm)	400 - 750	weight (g)	115

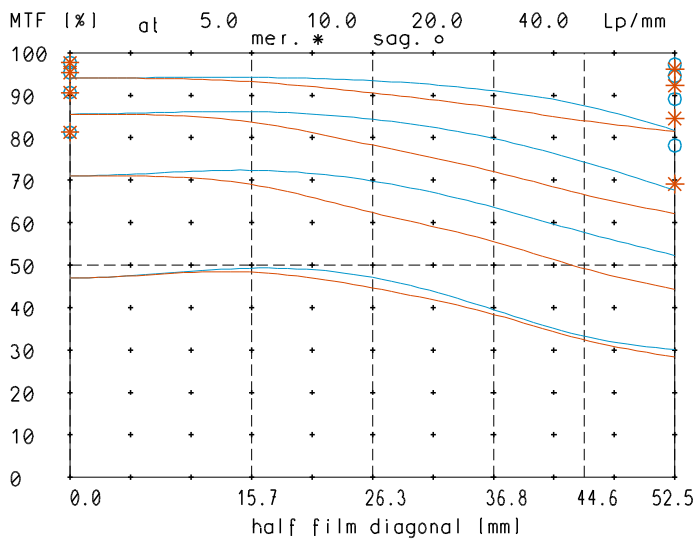


design includes CCD cover glass:	no		
SF (mm)	-117.1	f-stop	$\varnothing EnP$
S'F' (mm) *	117.2		$\varnothing Exp$
HH' (mm) *	-0.1	5.6	23.8 23.3
SH (mm)	19.1	8	17.1 16.7
S'H' (mm) *	-19.1	11	12.4 12.2
SEnP (mm)	21.9	16	8.5 8.4
S'Exp (mm) *	-16.3	22	6.2 6.2

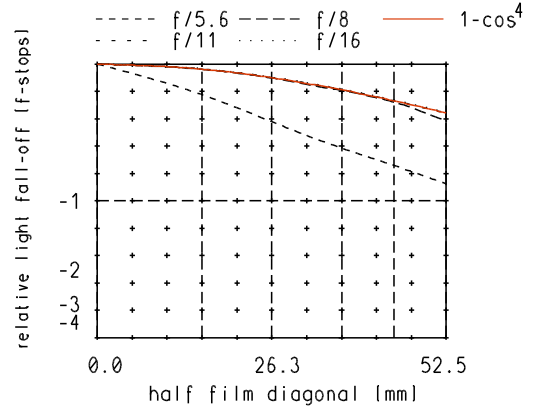
PROTECTIVE NOTE "DIN ISO 16016" TO BE OBSERVED	EU-D		AL-T1A		US-D		US-ML		not export controlled		
	REV		ECC		DATE		APPROVED		GENERAL TOLERANCE OF DIMENSION, FORM, POS.		
	a		Neuausg						SCALE 1:1		
	b		11-358		13.07.11		Kuehne		MATERIAL		
	c		11-022		09.08.11		Denk		TITLE		
	d		12-0185		28.03.12		Schuber		Rodagon 5.6/135		
	e		12-0185		25.04.12		Schuber				
	f		14-0184		18.03.14		Schiffle				
g		14-0184		12.08.14		Schiffle					
h		14-0184		19.02.15		Schiffle		FIRST DATE NAME ISSUE 28.06.06 Fleck CHKD 28.06.06 Hegele			
DIN A 4		ALL DIMENSIONS ARE IN MM AND INCLUDE SURFACE TREATMENT						DRAWING NO. 0701-398-100-00-0001h		SHEET 1 OF 1	
								REPLACES			

Rodagon_135

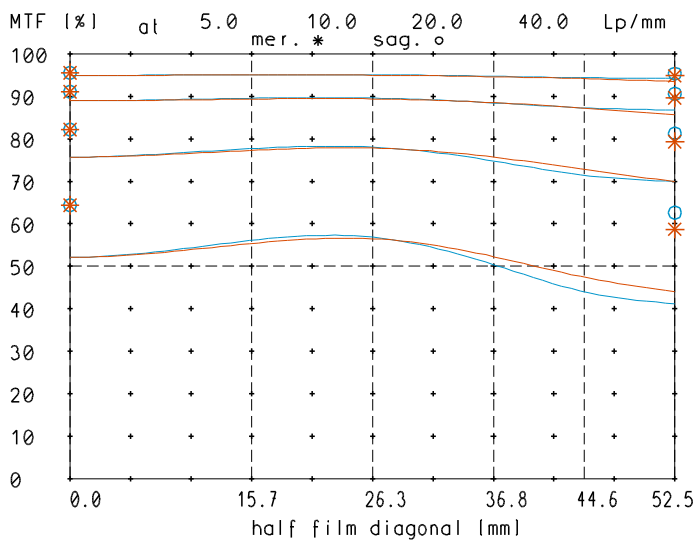
MTF at ratio 0.2x f/ 5.6



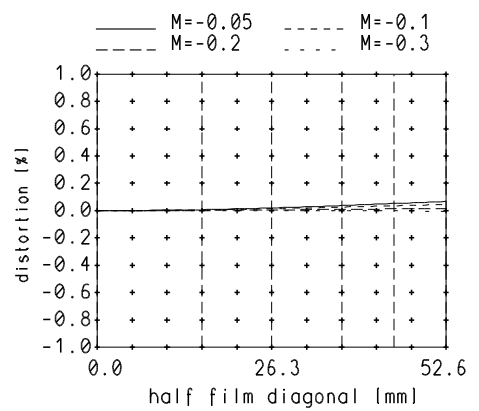
relative light fall-off at ratio 0.2x



MTF at ratio 0.2x f/ 11

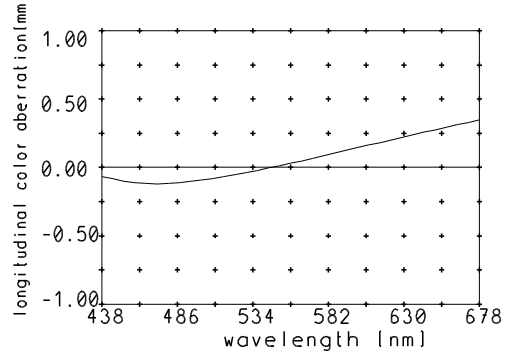


Distortion at ratio -0.05 to -0.3



— sagittal, o Diffraction limited value
— meridional * Diffraction limited value

Longitudinal color aberration at ratio 0.2x



Named frequencies (line pairs/mm) in modular transfer function (MTF) as well as diagrams of relative light fall-off, distortion and longitudinal color aberration refer to film plane.