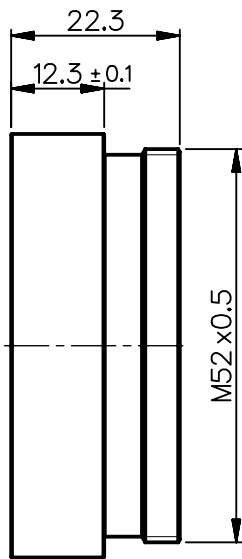
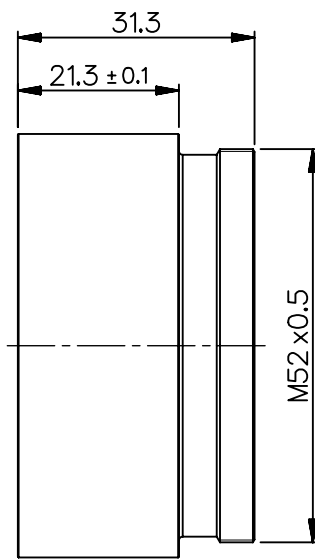


extension tube
length: 15mm



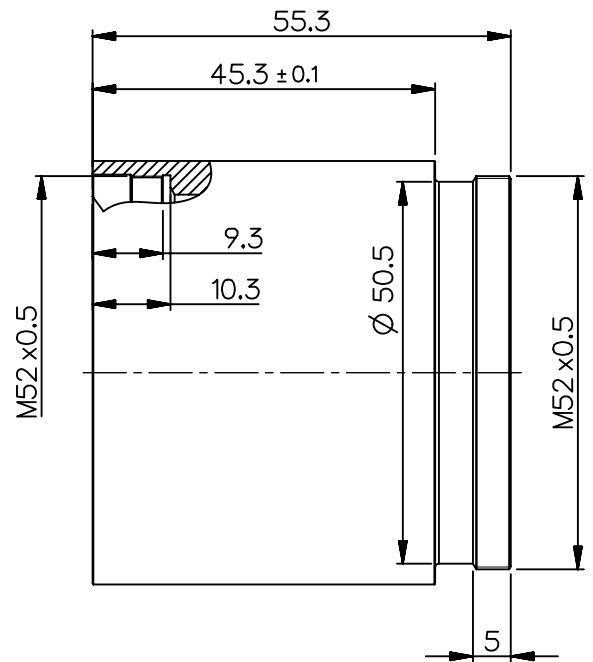
Part number
2408-021-117-00

extension tube
length: 24mm



Part number
2408-021-118-00

extension tube
length: 48mm



Part number
2408-021-119-00

NX	EU-D		AL-T1A		US-D		US-ML		not export controlled		
	REV	ECC	DATE	APPROVED	GENERAL TOLERANCE OF DIMENSION, FORM, POS.	SURF. TREATMT	PDM Status		-		
PROTECTIVE NOTE "DIN ISO 16016" TO BE OBSERVED	a	Neuausg	02.08.22	Georgie	ISO 2768-mH	black, anodised	Freigabe		-		
					BASIC TOLERANCING PRINCIPLE		SCALE		1:1		
					ISO 8015		MATERIAL		Aluminium alloy		
					FIRST ISSUE	DATE	NAME	TITLE		Extension Tube M52	
					CHKD	05.08.22	Stauder	DRAWING NO.		2408-021-100-47-0001a	
DIN A 4	ALL DIMENSIONS ARE IN MM AND INCLUDE SURFACE TREATMENT							REPLACES		SHEET 1 OF 1	